

GMPPB Antibody (Center)

Purified Rabbit Polyclonal Antibody (Pab)

Catalog # AP22043c

Product Information

Application	WB, E
Primary Accession	Q9Y5P6
Other Accession	Q8BTZ7 , P0C5I2
Reactivity	Human, Mouse
Predicted	Pig
Host	Rabbit
Clonality	polyclonal
Isotype	Rabbit IgG
Clone Names	RB55062
Calculated MW	39834

Additional Information

Gene ID	29925
Other Names	Mannose-1-phosphate guanyltransferase beta, 2.7.7.13, GDP-mannose pyrophosphorylase B, GTP-mannose-1-phosphate guanylyltransferase beta, GMPPB
Target/Specificity	This GMPPB antibody is generated from a rabbit immunized with a KLH conjugated synthetic peptide between 129-162 amino acids from the Central region of human GMPPB.
Dilution	WB~~1:4000 E~~Use at an assay dependent concentration.
Format	Purified polyclonal antibody supplied in PBS with 0.09% (W/V) sodium azide. This antibody is purified through a protein A column, followed by peptide affinity purification.
Storage	Maintain refrigerated at 2-8°C for up to 2 weeks. For long term storage store at -20°C in small aliquots to prevent freeze-thaw cycles.
Precautions	GMPPB Antibody (Center) is for research use only and not for use in diagnostic or therapeutic procedures.

Protein Information

Name	GMPPB (HGNC:22932)
Function	Catalytic subunit of the GMPPA-GMPPB mannose-1-phosphate guanylyltransferase complex (PubMed: 33986552). Catalyzes the formation of

GDP-mannose, an essential precursor of glycan moieties of glycoproteins and glycolipids (PubMed:[33986552](#)). Can catalyze the reverse reaction in vitro (PubMed:[33986552](#)). Together with GMPPA regulates GDP-alpha-D-mannose levels (PubMed:[33986552](#)).

Cellular Location Cytoplasm.

Tissue Location [Isoform 1]: Ubiquitously expressed, including in brain and skeletal muscle.

References

Matthijs G.,et al.Submitted (MAR-1999) to the EMBL/GenBank/DDBJ databases.

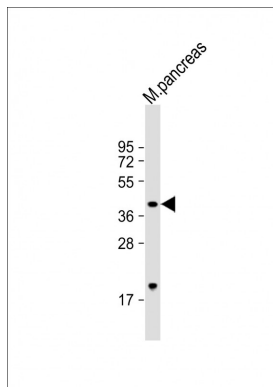
Ota T.,et al.Nat. Genet. 36:40-45(2004).

Muzny D.M.,et al.Nature 440:1194-1198(2006).

Burkard T.R.,et al.BMC Syst. Biol. 5:17-17(2011).

Van Damme P.,et al.Proc. Natl. Acad. Sci. U.S.A. 109:12449-12454(2012).

Images



Anti-GMPPB Antibody (Center) at 1:4000 dilution + mouse pancreas lysate Lysates/proteins at 20 µg per lane. Secondary Goat Anti-Rabbit IgG, (H+L), Peroxidase conjugated at 1/10000 dilution. Predicted band size : 40 kDa Blocking/Dilution buffer: 5% NFDM/TBST.

Please note: All products are 'FOR RESEARCH USE ONLY. NOT FOR USE IN DIAGNOSTIC OR THERAPEUTIC PROCEDURES'.