

LHPP Antibody (Center)

Purified Rabbit Polyclonal Antibody (Pab)

Catalog # AP22044c

Product Information

Application	WB, E
Primary Accession	Q9H008
Other Accession	Q0VD18
Reactivity	Human
Predicted	Bovine
Host	Rabbit
Clonality	polyclonal
Isotype	Rabbit IgG
Clone Names	RB55322
Calculated MW	29165

Additional Information

Gene ID	64077
Other Names	Phospholysine phosphohistidine inorganic pyrophosphate phosphatase, hLHPP, 3.1.3.-, 3.6.1.1, LHPP
Target/Specificity	This LHPP antibody is generated from a rabbit immunized with a KLH conjugated synthetic peptide between 84-116 amino acids from the Central region of human LHPP.
Dilution	WB~~1:2000 E~~Use at an assay dependent concentration.
Format	Purified polyclonal antibody supplied in PBS with 0.09% (W/V) sodium azide. This antibody is purified through a protein A column, followed by peptide affinity purification.
Storage	Maintain refrigerated at 2-8°C for up to 2 weeks. For long term storage store at -20°C in small aliquots to prevent freeze-thaw cycles.
Precautions	LHPP Antibody (Center) is for research use only and not for use in diagnostic or therapeutic procedures.

Protein Information

Name	LHPP
Function	Phosphatase that hydrolyzes imidodiphosphate, 3- phosphohistidine and 6-phospholysine. Has broad substrate specificity and can also hydrolyze inorganic diphosphate, but with lower efficiency (By similarity).

Cellular Location	Cytoplasm. Nucleus
Tissue Location	Expressed in brain, and at lower levels in liver and kidney. Detected in thyroid (at protein level). Expressed in liver, kidney and moderately in brain.

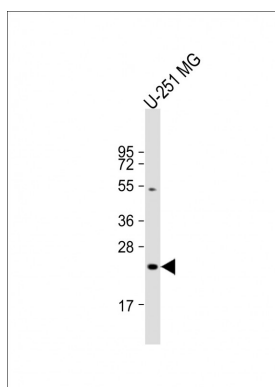
Background

Phosphatase that hydrolyzes imidodiphosphate, 3- phosphohistidine and 6-phospholysine. Has broad substrate specificity and can also hydrolyze inorganic diphosphate, but with lower efficiency (By similarity).

References

Yokoi F.,et al.J. Biochem. 133:607-614(2003).
Ota T.,et al.Nat. Genet. 36:40-45(2004).
Deloukas P.,et al.Nature 429:375-381(2004).
Koike E.,et al.Biochem. Biophys. Res. Commun. 341:691-696(2006).

Images



Anti-LHPP Antibody (Center) at 1:2000 dilution + U-251 MG whole cell lysate Lysates/proteins at 20 µg per lane. Secondary Goat Anti-Rabbit IgG, (H+L), Peroxidase conjugated at 1/10000 dilution. Predicted band size : 29 kDa Blocking/Dilution buffer: 5% NFDM/TBST.

Please note: All products are 'FOR RESEARCH USE ONLY. NOT FOR USE IN DIAGNOSTIC OR THERAPEUTIC PROCEDURES'.