

ACP6 Antibody (N-Term)

Purified Rabbit Polyclonal Antibody (Pab)

Catalog # AP22045a

Product Information

Application	WB, E
Primary Accession	Q9NPH0
Other Accession	A6H75Z , Q5R8C0
Reactivity	Human, Mouse
Predicted	Bovine
Host	Rabbit
Clonality	polyclonal
Isotype	Rabbit IgG
Clone Names	RB54993
Calculated MW	48886

Additional Information

Gene ID	51205
Other Names	Lysophosphatidic acid phosphatase type 6, 3.1.3.2, Acid phosphatase 6, lysophosphatidic, Acid phosphatase-like protein 1, PACPL1, ACP6, ACPL1, LPAP
Target/Specificity	This ACP6 antibody is generated from a rabbit immunized with a KLH conjugated synthetic peptide between 116-146 amino acids from of human ACP6.
Dilution	WB~~1:2000 E~~Use at an assay dependent concentration.
Format	Purified polyclonal antibody supplied in PBS with 0.09% (W/V) sodium azide. This antibody is purified through a protein A column, followed by peptide affinity purification.
Storage	Maintain refrigerated at 2-8°C for up to 2 weeks. For long term storage store at -20°C in small aliquots to prevent freeze-thaw cycles.
Precautions	ACP6 Antibody (N-Term) is for research use only and not for use in diagnostic or therapeutic procedures.

Protein Information

Name	ACP6
Synonyms	ACPL1, LPAP

Function	Hydrolyzes lysophosphatidic acid (LPA) containing a medium length fatty acid chain to the corresponding monoacylglycerol. Has highest activity with lysophosphatidic acid containing myristate (C14:0), monounsaturated oleate (C18:1) or palmitate (C16:0), and lower activity with C18:0 and C6:0 lysophosphatidic acid.
Cellular Location	Mitochondrion.
Tissue Location	Highly expressed in kidney, heart, small intestine, muscle, liver, prostate, testis, ovary and weakly expressed in thymus and colon.

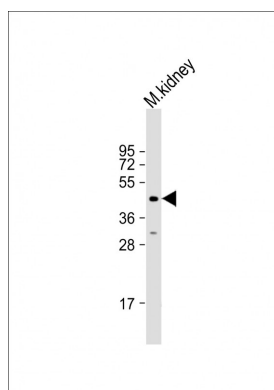
Background

Hydrolyzes lysophosphatidic acid (LPA) containing a medium length fatty acid chain to the corresponding monoacylglycerol. Has highest activity with lysophosphatidic acid containing myristate (C14:0), monounsaturated oleate (C18:1) or palmitate (C16:0), and lower activity with C18:0 and C6:0 lysophosphatidic acid.

References

Hiroshima M., et al. J. Biol. Chem. 274:29172-29180(1999).
Takayama I., et al. Gut 50:790-796(2002).
Clark H.F., et al. Genome Res. 13:2265-2270(2003).
Ota T., et al. Nat. Genet. 36:40-45(2004).
Totoki Y., et al. Submitted (MAR-2005) to the EMBL/GenBank/DBJ databases.

Images



Anti-ACP6 Antibody (N-Term) at 1:2000 dilution + mouse kidney lysate Lysates/proteins at 20 µg per lane. Secondary Goat Anti-Rabbit IgG, (H+L), Peroxidase conjugated at 1/10000 dilution. Predicted band size : 49 kDa Blocking/Dilution buffer: 5% NFDM/TBST.

Please note: All products are 'FOR RESEARCH USE ONLY. NOT FOR USE IN DIAGNOSTIC OR THERAPEUTIC PROCEDURES'.