

# ACP6 Antibody (Center)

Purified Rabbit Polyclonal Antibody (Pab)

Catalog # AP22046c

## Product Information

---

Application	WB, E
Primary Accession	<a href="#">Q9NPH0</a>
Reactivity	Human, Mouse
Host	Rabbit
Clonality	polyclonal
Isotype	Rabbit IgG
Clone Names	RB54994
Calculated MW	48886

## Additional Information

---

Gene ID	51205
Other Names	Lysophosphatidic acid phosphatase type 6, 3.1.3.2, Acid phosphatase 6, lysophosphatidic, Acid phosphatase-like protein 1, PACPL1, ACP6, ACPL1, LPAP
Target/Specificity	This ACP6 antibody is generated from a rabbit immunized with a KLH conjugated synthetic peptide between 251-283 amino acids from the Central region of human ACP6.
Dilution	WB~~1:2000 E~~Use at an assay dependent concentration.
Format	Purified polyclonal antibody supplied in PBS with 0.09% (W/V) sodium azide. This antibody is purified through a protein A column, followed by peptide affinity purification.
Storage	Maintain refrigerated at 2-8°C for up to 2 weeks. For long term storage store at -20°C in small aliquots to prevent freeze-thaw cycles.
Precautions	ACP6 Antibody (Center) is for research use only and not for use in diagnostic or therapeutic procedures.

## Protein Information

---

Name	ACP6
Synonyms	ACPL1, LPAP
Function	Hydrolyzes lysophosphatidic acid (LPA) containing a medium length fatty acid chain to the corresponding monoacylglycerol. Has highest activity with

lysophosphatidic acid containing myristate (C14:0), monounsaturated oleate (C18:1) or palmitate (C16:0), and lower activity with C18:0 and C6:0 lysophosphatidic acid.

**Cellular Location**

Mitochondrion.

**Tissue Location**

Highly expressed in kidney, heart, small intestine, muscle, liver, prostate, testis, ovary and weakly expressed in thymus and colon.

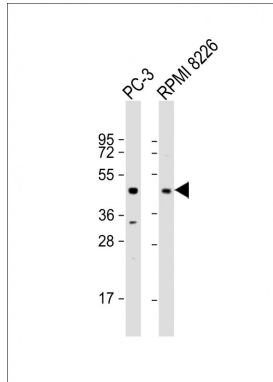
## Background

Hydrolyzes lysophosphatidic acid (LPA) containing a medium length fatty acid chain to the corresponding monoacylglycerol. Has highest activity with lysophosphatidic acid containing myristate (C14:0), monounsaturated oleate (C18:1) or palmitate (C16:0), and lower activity with C18:0 and C6:0 lysophosphatidic acid.

## References

Hiroshima M., et al. J. Biol. Chem. 274:29172-29180(1999).  
Takayama I., et al. Gut 50:790-796(2002).  
Clark H.F., et al. Genome Res. 13:2265-2270(2003).  
Ota T., et al. Nat. Genet. 36:40-45(2004).  
Totoki Y., et al. Submitted (MAR-2005) to the EMBL/GenBank/DBJ databases.

## Images



All lanes : Anti-ACP6 Antibody (Center) at 1:2000 dilution  
Lane 1: PC-3 whole cell lysate Lane 2: RPMI 8226 whole cell lysate  
Lysates/proteins at 20 µg per lane. Secondary Goat Anti-Rabbit IgG, (H+L), Peroxidase conjugated at 1/10000 dilution. Predicted band size : 49 kDa  
Blocking/Dilution buffer: 5% NFDM/TBST.

Please note: All products are 'FOR RESEARCH USE ONLY. NOT FOR USE IN DIAGNOSTIC OR THERAPEUTIC PROCEDURES'.