

# GC Antibody (C-Term)

Purified Rabbit Polyclonal Antibody (Pab)

Catalog # AP22047b

## Product Information

---

<b>Application</b>	WB, E
<b>Primary Accession</b>	<a href="#">P02774</a>
<b>Reactivity</b>	Human
<b>Host</b>	Rabbit
<b>Clonality</b>	polyclonal
<b>Isotype</b>	Rabbit IgG
<b>Clone Names</b>	RB55083
<b>Calculated MW</b>	52918

## Additional Information

---

<b>Gene ID</b>	2638
<b>Other Names</b>	Vitamin D-binding protein, DBP, VDB, Gc-globulin, Group-specific component, GC
<b>Target/Specificity</b>	This GC antibody is generated from a rabbit immunized with a KLH conjugated synthetic peptide between 442-473 amino acids from human GC.
<b>Dilution</b>	WB~~1:2000 E~~Use at an assay dependent concentration.
<b>Format</b>	Purified polyclonal antibody supplied in PBS with 0.09% (W/V) sodium azide. This antibody is purified through a protein A column, followed by peptide affinity purification.
<b>Storage</b>	Maintain refrigerated at 2-8°C for up to 2 weeks. For long term storage store at -20°C in small aliquots to prevent freeze-thaw cycles.
<b>Precautions</b>	GC Antibody (C-Term) is for research use only and not for use in diagnostic or therapeutic procedures.

## Protein Information

---

<b>Name</b>	GC
<b>Function</b>	Involved in vitamin D transport and storage, scavenging of extracellular G-actin, enhancement of the chemotactic activity of C5 alpha for neutrophils in inflammation and macrophage activation.
<b>Cellular Location</b>	Secreted.

## Tissue Location

Expressed in the liver. Found in plasma, ascites, cerebrospinal fluid and urine.

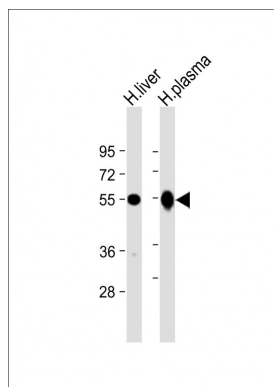
## Background

Multifunctional protein found in plasma, ascitic fluid, cerebrospinal fluid, and urine and on the surface of many cell types. In plasma, it carries the vitamin D sterols and prevents polymerization of actin by binding its monomers. DBP associates with membrane-bound immunoglobulin on the surface of B-lymphocytes and with IgG Fc receptor on the membranes of T-lymphocytes.

## References

Cooke N.E.,et al.J. Clin. Invest. 76:2420-2424(1985).  
Yang F.,et al.Proc. Natl. Acad. Sci. U.S.A. 82:7994-7998(1985).  
Braun A.,et al.Biochim. Biophys. Acta 1216:385-394(1993).  
Witke W.F.,et al.Genomics 16:751-754(1993).  
Ota T.,et al.Nat. Genet. 36:40-45(2004).

## Images



All lanes : Anti-GC Antibody (C-Term) at 1:2000 dilution  
Lane 1: human liver lysate Lane 2: human plasma lysate  
Lysates/proteins at 20 µg per lane. Secondary Goat  
Anti-Rabbit IgG, (H+L), Peroxidase conjugated at 1/10000  
dilution. Predicted band size : 53 kDa Blocking/Dilution  
buffer: 5% NFDM/TBST.

Please note: All products are 'FOR RESEARCH USE ONLY. NOT FOR USE IN DIAGNOSTIC OR THERAPEUTIC PROCEDURES'.