

# NUP85 Antibody (N-Term)

Purified Rabbit Polyclonal Antibody (Pab)

Catalog # AP22048a

## Product Information

---

Application	WB, E
Primary Accession	<a href="#">Q9BW27</a>
Reactivity	Human
Host	Rabbit
Clonality	polyclonal
Isotype	Rabbit IgG
Clone Names	RB55052
Calculated MW	75019

## Additional Information

---

Gene ID	79902
Other Names	Nuclear pore complex protein Nup85, 85 kDa nucleoporin, FROUNT, Nucleoporin Nup75, Nucleoporin Nup85, Pericentrin-1, NUP85, NUP75, PCNT1
Target/Specificity	This NUP85 antibody is generated from a rabbit immunized with a KLH conjugated synthetic peptide between 163-195 amino acids from human NUP85.
Dilution	WB~~1:2000 E~~Use at an assay dependent concentration.
Format	Purified polyclonal antibody supplied in PBS with 0.09% (W/V) sodium azide. This antibody is purified through a protein A column, followed by peptide affinity purification.
Storage	Maintain refrigerated at 2-8°C for up to 2 weeks. For long term storage store at -20°C in small aliquots to prevent freeze-thaw cycles.
Precautions	NUP85 Antibody (N-Term) is for research use only and not for use in diagnostic or therapeutic procedures.

## Protein Information

---

Name	NUP85
Synonyms	NUP75, PCNT1
Function	Essential component of the nuclear pore complex (NPC) that seems to be required for NPC assembly and maintenance (PubMed: <a href="#">12718872</a> ). As part of

the NPC Nup107-160 subcomplex plays a role in RNA export and in tethering NUP96/Nup98 and NUP153 to the nucleus (PubMed:[12718872](#)). The Nup107-160 complex seems to be required for spindle assembly during mitosis (PubMed:[16807356](#)). NUP85 is required for membrane clustering of CCL2-activated CCR2 (PubMed:[15995708](#)). Seems to be involved in CCR2-mediated chemotaxis of monocytes and may link activated CCR2 to the phosphatidylinositol 3-kinase-Rac-lamellipodium protrusion cascade (PubMed:[15995708](#)). Involved in nephrogenesis (PubMed:[30179222](#)).

### Cellular Location

Nucleus, nuclear pore complex. Chromosome, centromere, kinetochore. Cytoplasm, cytoskeleton, spindle. Cytoplasm. Nucleus membrane. Note=During mitosis, localizes to the kinetochores and spindle poles (PubMed:[12718872](#), PubMed:[16807356](#)). Upon CCL2 stimulation translocates from the cytoplasm to the membrane and colocalizes with CCR2 at the front of migrating cells (PubMed:[15995708](#)).

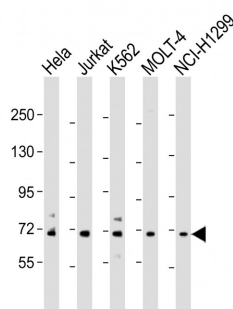
## Background

Essential component of the nuclear pore complex (NPC) that seems to be required for NPC assembly and maintenance. As part of the NPC Nup107-160 subcomplex plays a role in RNA export and in tethering NUP98/Nup98 and NUP153 to the nucleus. The Nup107-160 complex seems to be required for spindle assembly during mitosis. NUP85 is required for membrane clustering of CCL2- activated CCR2. Seems to be involved in CCR2-mediated chemotaxis of monocytes and may link activated CCR2 to the phosphatidylinositol 3-kinase-Rac-lamellipodium protrusion cascade.

## References

Cronshaw J.M.,et al.J. Cell Biol. 158:915-927(2002).  
 Terashima Y.,et al.Nat. Immunol. 6:827-835(2005).  
 Ota T.,et al.Nat. Genet. 36:40-45(2004).  
 Bechtel S.,et al.BMC Genomics 8:399-399(2007).  
 Zody M.C.,et al.Nature 440:1045-1049(2006).

## Images



All lanes : Anti-NUP85 Antibody (N-Term) at 1:2000 dilution Lane 1: HeLa whole cell lysate Lane 2: Jurkat whole cell lysate Lane 3: K562 whole cell lysate Lane 4: MOLT-4 whole cell lysate Lane 5: NCI-H1299 whole cell lysate Lysates/proteins at 20 µg per lane. Secondary Goat Anti-Rabbit IgG, (H+L), Peroxidase conjugated at 1/10000 dilution. Predicted band size : 75 kDa Blocking/Dilution buffer: 5% NFDM/TBST.

Please note: All products are 'FOR RESEARCH USE ONLY. NOT FOR USE IN DIAGNOSTIC OR THERAPEUTIC PROCEDURES'.