

# SEC24D Antibody (N-Term)

Purified Rabbit Polyclonal Antibody (Pab)

Catalog # AP22049a

## Product Information

---

<b>Application</b>	WB, E
<b>Primary Accession</b>	<a href="#">O94855</a>
<b>Reactivity</b>	Human
<b>Host</b>	Rabbit
<b>Clonality</b>	polyclonal
<b>Isotype</b>	Rabbit IgG
<b>Clone Names</b>	RB55324
<b>Calculated MW</b>	113010

## Additional Information

---

<b>Gene ID</b>	9871
<b>Other Names</b>	Protein transport protein Sec24D, SEC24-related protein D, SEC24D, KIAA0755
<b>Target/Specificity</b>	This SEC24D antibody is generated from a rabbit immunized with a KLH conjugated synthetic peptide between 235-266 amino acids from human SEC24D.
<b>Dilution</b>	WB~~1:2000 E~~Use at an assay dependent concentration.
<b>Format</b>	Purified polyclonal antibody supplied in PBS with 0.09% (W/V) sodium azide. This antibody is purified through a protein A column, followed by peptide affinity purification.
<b>Storage</b>	Maintain refrigerated at 2-8°C for up to 2 weeks. For long term storage store at -20°C in small aliquots to prevent freeze-thaw cycles.
<b>Precautions</b>	SEC24D Antibody (N-Term) is for research use only and not for use in diagnostic or therapeutic procedures.

## Protein Information

---

<b>Name</b>	SEC24D ( <a href="#">HGNC:10706</a> )
<b>Function</b>	Component of the coat protein complex II (COPII) which promotes the formation of transport vesicles from the endoplasmic reticulum (ER). The coat has two main functions, the physical deformation of the endoplasmic reticulum membrane into vesicles and the selection of cargo molecules for their transport to the Golgi complex (PubMed: <a href="#">17499046</a> , PubMed: <a href="#">18843296</a> , PubMed: <a href="#">20427317</a> ). Plays a central role in cargo selection within the COPII

complex and together with SEC24C may have a different specificity compared to SEC24A and SEC24B (PubMed:[17499046](#), PubMed:[18843296](#), PubMed:[20427317](#)). May more specifically package GPI-anchored proteins through the cargo receptor TMED10 (PubMed:[20427317](#)). May also be specific for IxM motif-containing cargos like the SNAREs GOSR2 and STX5 (PubMed:[18843296](#)).

#### Cellular Location

Cytoplasmic vesicle, COPII-coated vesicle membrane; Peripheral membrane protein {ECO:0000250|UniProtKB:P53992}; Cytoplasmic side {ECO:0000250|UniProtKB:P53992}. Endoplasmic reticulum membrane; Peripheral membrane protein {ECO:0000250|UniProtKB:P53992}; Cytoplasmic side {ECO:0000250|UniProtKB:P53992}. Cytoplasm, cytosol {ECO:0000250|UniProtKB:P53992}

#### Tissue Location

Ubiquitously expressed, with higher amounts in placenta, pancreas, heart and liver.

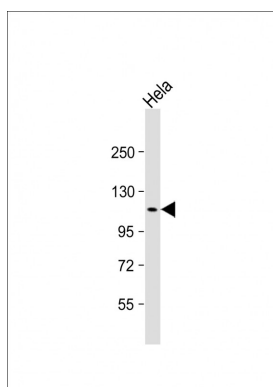
## Background

Component of the COPII coat, that covers ER-derived vesicles involved in transport from the endoplasmic reticulum to the Golgi apparatus. COPII acts in the cytoplasm to promote the transport of secretory, plasma membrane, and vacuolar proteins from the endoplasmic reticulum to the Golgi complex.

## References

Tang B.L.,et al.Biochem. Biophys. Res. Commun. 258:679-684(1999).  
Nagase T.,et al.DNA Res. 5:277-286(1998).  
Mural R.J.,et al.Submitted (JUL-2005) to the EMBL/GenBank/DDBJ databases.  
Bonnon C.,et al.J. Cell Sci. 123:1705-1715(2010).  
Burkard T.R.,et al.BMC Syst. Biol. 5:17-17(2011).

## Images



Anti-SEC24D Antibody (N-Term) at 1:2000 dilution + HeLa whole cell lysate Lysates/proteins at 20 µg per lane. Secondary Goat Anti-Rabbit IgG, (H+L), Peroxidase conjugated at 1/10000 dilution. Predicted band size : 113 kDa Blocking/Dilution buffer: 5% NFDM/TBST.

Please note: All products are 'FOR RESEARCH USE ONLY. NOT FOR USE IN DIAGNOSTIC OR THERAPEUTIC PROCEDURES'.