

CCT8L2 Antibody (C-Term)

Purified Rabbit Polyclonal Antibody (Pab)

Catalog # AP22051b

Product Information

Application	WB, E
Primary Accession	Q96SF2
Reactivity	Human
Host	Rabbit
Clonality	polyclonal
Isotype	Rabbit IgG
Clone Names	RB54709
Calculated MW	59388

Additional Information

Gene ID	150160
Other Names	Putative T-complex protein 1 subunit theta-like 2, CCT8L2, CESK1
Target/Specificity	This CCT8L2 antibody is generated from a rabbit immunized with a KLH conjugated synthetic peptide between 511-542 amino acids from human CCT8L2.
Dilution	WB~~1:2000 E~~Use at an assay dependent concentration.
Format	Purified polyclonal antibody supplied in PBS with 0.09% (W/V) sodium azide. This antibody is purified through a protein A column, followed by peptide affinity purification.
Storage	Maintain refrigerated at 2-8°C for up to 2 weeks. For long term storage store at -20°C in small aliquots to prevent freeze-thaw cycles.
Precautions	CCT8L2 Antibody (C-Term) is for research use only and not for use in diagnostic or therapeutic procedures.

Protein Information

Name	CCT8L2
Synonyms	CESK1
Function	Possible molecular chaperone; assists the folding of proteins upon ATP hydrolysis.
Cellular Location	Cytoplasm {ECO:0000250 UniProtKB:P40227}.

Background

Possible molecular chaperone; assists the folding of proteins upon ATP hydrolysis.

References

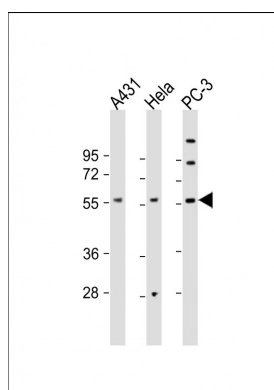
Riazi M.A.,et al.Genomics 62:90-94(1999).

Collins J.E.,et al.Genome Biol. 5:R84.1-R84.11(2004).

Dunham I.,et al.Nature 402:489-495(1999).

Mural R.J.,et al.Submitted (JUL-2005) to the EMBL/GenBank/DDBJ databases.

Images



All lanes : Anti-CCT8L2 Antibody (C-Term) at 1:2000 dilution Lane 1: A431 whole cell lysate Lane 2: HeLa whole cell lysate Lane 3: PC-3 whole cell lysate Lysates/proteins at 20 µg per lane. Secondary Goat Anti-Rabbit IgG, (H+L), Peroxidase conjugated at 1/10000 dilution. Predicted band size : 59 kDa Blocking/Dilution buffer: 5% NFDM/TBST.

Please note: All products are 'FOR RESEARCH USE ONLY. NOT FOR USE IN DIAGNOSTIC OR THERAPEUTIC PROCEDURES'.