

LSR Antibody (C-Term)

Purified Rabbit Polyclonal Antibody (Pab)

Catalog # AP22065b

Product Information

Application	WB, E
Primary Accession	Q86X29
Reactivity	Human
Host	Rabbit
Clonality	polyclonal
Isotype	Rabbit IgG
Clone Names	RB55399
Calculated MW	71439

Additional Information

Gene ID	51599
Other Names	Lipolysis-stimulated lipoprotein receptor, LSR, LISCH
Target/Specificity	This LSR antibody is generated from a rabbit immunized with a KLH conjugated synthetic peptide between 550-583 amino acids from human LSR.
Dilution	WB~~1:1000 E~~Use at an assay dependent concentration.
Format	Purified polyclonal antibody supplied in PBS with 0.09% (W/V) sodium azide. This antibody is purified through a protein A column, followed by peptide affinity purification.
Storage	Maintain refrigerated at 2-8°C for up to 2 weeks. For long term storage store at -20°C in small aliquots to prevent freeze-thaw cycles.
Precautions	LSR Antibody (C-Term) is for research use only and not for use in diagnostic or therapeutic procedures.

Protein Information

Name	LSR (HGNC:29572)
Synonyms	ILDR3, LISCH
Function	Probable role in the clearance of triglyceride-rich lipoprotein from blood. Binds chylomicrons, LDL and VLDL in presence of free fatty acids and allows their subsequent uptake in the cells (By similarity). Maintains epithelial barrier function by recruiting MARVELD2/tricellulin to tricellular tight junctions (By similarity).

Cellular Location

Cell membrane; Single-pass type I membrane protein. Cell junction, tight junction Note=Located at tricellular contacts.

Background

Probable role in the clearance of triglyceride-rich lipoprotein from blood. Binds chylomicrons, LDL and VLDL in presence of free fatty acids and allows their subsequent uptake in the cells (By similarity).

References

Teramoto T.,et al.Submitted (FEB-1999) to the EMBL/GenBank/DDBJ databases.

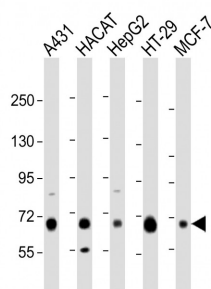
Ota T.,et al.Nat. Genet. 36:40-45(2004).

Otsuki T.,et al.DNA Res. 12:117-126(2005).

Grimwood J.,et al.Nature 428:529-535(2004).

Tang L.-Y.,et al.Mol. Cell. Proteomics 6:1952-1967(2007).

Images



All lanes : Anti-LSR Antibody (C-Term) at 1:1000 dilution
Lane 1: A431 whole cell lysate Lane 2: HACAT whole cell lysate
Lane 3: HepG2 whole cell lysate Lane 4: HT-29 whole cell lysate
Lane 5: MCF-7 whole cell lysate
Lysates/proteins at 20 µg per lane. Secondary Goat Anti-Rabbit IgG, (H+L), Peroxidase conjugated at 1/10000 dilution. Predicted band size : 71 kDa Blocking/Dilution buffer: 5% NFDM/TBST.

Please note: All products are 'FOR RESEARCH USE ONLY. NOT FOR USE IN DIAGNOSTIC OR THERAPEUTIC PROCEDURES'.