

RPS7 Antibody (N-Term)

Purified Rabbit Polyclonal Antibody (Pab)

Catalog # AP22077a

Product Information

Application	WB, FC, E
Primary Accession	P62081
Other Accession	A6H769 , P62084 , Q5RT64 , P62082 , P62083 , P50894 , P02362
Reactivity	Human, Mouse
Predicted	Bovine, Mouse, Rat
Host	Rabbit
Clonality	polyclonal
Isotype	Rabbit IgG
Clone Names	RB55875
Calculated MW	22127

Additional Information

Gene ID	6201
Other Names	40S ribosomal protein S7, RPS7
Target/Specificity	This RPS7 antibody is generated from a rabbit immunized with a KLH conjugated synthetic peptide between 7-40 amino acids from human RPS7.
Dilution	WB~~1:2000 FC~~1:25 E~~Use at an assay dependent concentration.
Format	Purified polyclonal antibody supplied in PBS with 0.09% (W/V) sodium azide. This antibody is purified through a protein A column, followed by peptide affinity purification.
Storage	Maintain refrigerated at 2-8°C for up to 2 weeks. For long term storage store at -20°C in small aliquots to prevent freeze-thaw cycles.
Precautions	RPS7 Antibody (N-Term) is for research use only and not for use in diagnostic or therapeutic procedures.

Protein Information

Name	RPS7 (HGNC:10440)
Function	Component of the small ribosomal subunit (PubMed: 23636399). The ribosome is a large ribonucleoprotein complex responsible for the synthesis of proteins in the cell (PubMed: 23636399). Required for rRNA maturation (PubMed: 19061985). Part of the small subunit (SSU) processome, first precursor of the small eukaryotic ribosomal subunit. During the assembly of

the SSU processome in the nucleolus, many ribosome biogenesis factors, an RNA chaperone and ribosomal proteins associate with the nascent pre-rRNA and work in concert to generate RNA folding, modifications, rearrangements and cleavage as well as targeted degradation of pre-ribosomal RNA by the RNA exosome (PubMed:[34516797](#)).

Cellular Location

Cytoplasm, cytoskeleton, microtubule organizing center, centrosome. Cytoplasm. Nucleus, nucleolus Note=Although RPS7 is functional within the cytoplasm, the assembly of ribosomal subunits occurs in the nucleus. RPS7 nuclear import is mediated by IPO5/RanBP5, IPO7/RanBP7, KPNB1/importin-beta or TPNO1/Trn (PubMed:9687515). Colocalizes with NEK6 in the centrosome (PubMed:20873783).

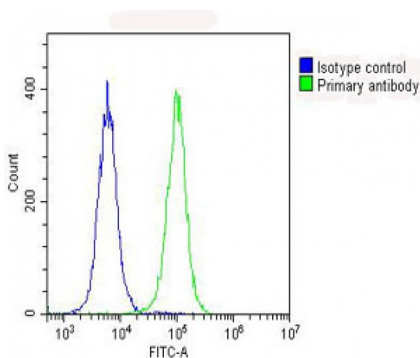
Background

Required for rRNA maturation.

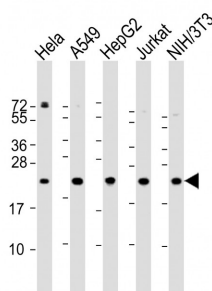
References

Annilo T.,et al.Gene 165:297-302(1995).
Ota T.,et al.Nat. Genet. 36:40-45(2004).
Hillier L.W.,et al.Nature 434:724-731(2005).
Mural R.J.,et al.Submitted (SEP-2005) to the EMBL/GenBank/DDBJ databases.
Vladimirov S.N.,et al.Eur. J. Biochem. 239:144-149(1996).

Images



Overlay histogram showing HeLa cells stained with AP22077a (green line). The cells were fixed with 2% paraformaldehyde (10 min) and then permeabilized with 90% methanol for 10 min. The cells were then incubated in 2% bovine serum albumin to block non-specific protein-protein interactions followed by the antibody (AP22077a, 1:25 dilution) for 60 min at 37°C. The secondary antibody used was Goat-Anti-Rabbit IgG, DyLight® 488 Conjugated Highly Cross-Adsorbed(OH191631) at 1/200 dilution for 40 min at 37°C. Isotype control antibody (blue line) was rabbit IgG (1µg/1x10⁶ cells) used under the same conditions. Acquisition of >10, 000 events was performed.



All lanes : Anti-RPS7 Antibody (N-Term) at 1:2000 dilution
Lane 1: HeLa whole cell lysate Lane 2: A549 whole cell lysate Lane 3: HepG2 whole cell lysate Lane 4: Jurkat whole cell lysate Lane 5: NIH/3T3 whole cell lysate
Lysates/proteins at 20 µg per lane. Secondary Goat Anti-Rabbit IgG, (H+L), Peroxidase conjugated at 1/10000 dilution. Predicted band size : 22 kDa Blocking/Dilution buffer: 5% NFDM/TBST.

Please note: All products are 'FOR RESEARCH USE ONLY. NOT FOR USE IN DIAGNOSTIC OR THERAPEUTIC PROCEDURES'.