

# SLC6A8 Antibody (N-Term)

Purified Rabbit Polyclonal Antibody (Pab)

Catalog # AP22082a

## Product Information

---

Application	WB, E
Primary Accession	<a href="#">P48029</a>
Other Accession	<a href="#">O18875</a> , <a href="#">Q8VBW1</a> , <a href="#">P28570</a>
Reactivity	Human, Rat, Mouse
Predicted	Bovine, Mouse, Rat
Host	Rabbit
Clonality	polyclonal
Isotype	Rabbit IgG
Clone Names	RB55060
Calculated MW	70523

## Additional Information

---

Gene ID	6535
Other Names	Sodium- and chloride-dependent creatine transporter 1, CT1, Creatine transporter 1, Solute carrier family 6 member 8, SLC6A8
Target/Specificity	This SLC6A8 antibody is generated from a rabbit immunized with a KLH conjugated synthetic peptide between 180-212 amino acids from human SLC6A8.
Dilution	WB~~1:2000 E~~Use at an assay dependent concentration.
Format	Purified polyclonal antibody supplied in PBS with 0.09% (W/V) sodium azide. This antibody is purified through a protein A column, followed by peptide affinity purification.
Storage	Maintain refrigerated at 2-8°C for up to 2 weeks. For long term storage store at -20°C in small aliquots to prevent freeze-thaw cycles.
Precautions	SLC6A8 Antibody (N-Term) is for research use only and not for use in diagnostic or therapeutic procedures.

## Protein Information

---

Name	SLC6A8
Function	Creatine:sodium symporter which mediates the uptake of creatine (PubMed: <a href="#">17465020</a> , PubMed: <a href="#">22644605</a> , PubMed: <a href="#">25861866</a> , PubMed: <a href="#">7945388</a> , PubMed: <a href="#">7953292</a> , PubMed: <a href="#">9882430</a> ). Plays an important

role in supplying creatine to the brain via the blood-brain barrier (By similarity).

**Cellular Location**

Cell membrane; Multi-pass membrane protein. Apical cell membrane; Multi-pass membrane protein

**Tissue Location**

Predominantly expressed in skeletal muscle and kidney. Also found in brain, heart, colon, testis and prostate

## Background

---

Required for the uptake of creatine in muscles and brain.

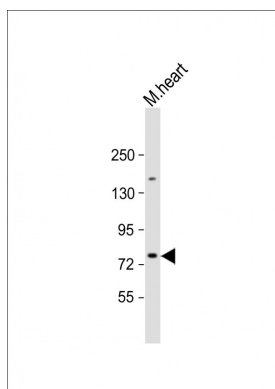
## References

---

Nash S.R.,et al.Recept. Channels 2:165-174(1994).  
Sora I.,et al.Biochem. Biophys. Res. Commun. 204:419-427(1994).  
Sandoval N.,et al.Genomics 35:383-385(1996).  
Barnwell L.F.,et al.Gene 159:287-288(1995).  
Martinez-Munoz C.,et al.Gene 418:53-59(2008).

## Images

---



Anti-SLC6A8 Antibody (N-Term) at 1:2000 dilution + mouse heart lysate Lysates/proteins at 20 µg per lane. Secondary Goat Anti-Rabbit IgG, (H+L), Peroxidase conjugated at 1/10000 dilution. Predicted band size : 71 kDa Blocking/Dilution buffer: 5% NFDM/TBST.

Please note: All products are 'FOR RESEARCH USE ONLY. NOT FOR USE IN DIAGNOSTIC OR THERAPEUTIC PROCEDURES'.