

FEM1B Antibody (C-Term)

Purified Rabbit Polyclonal Antibody (Pab)

Catalog # AP22084b

Product Information

Application	WB, E
Primary Accession	Q9UK73
Other Accession	Q9Z2G0 , P0C6P7
Reactivity	Human, Rat, Mouse
Predicted	Mouse, Rat
Host	Rabbit
Clonality	polyclonal
Isotype	Rabbit IgG
Clone Names	RB54743
Calculated MW	70264

Additional Information

Gene ID	10116
Other Names	Protein fem-1 homolog B, FEM1b, FEM1-beta, Fem-1-like death receptor-binding protein alpha, Fem-1-like in apoptotic pathway protein alpha, F1A-alpha, FEM1B, F1AA, KIAA0396
Target/Specificity	This FEM1B antibody is generated from a rabbit immunized with a KLH conjugated synthetic peptide between 547-579 amino acids from human FEM1B.
Dilution	WB~~1:2000 E~~Use at an assay dependent concentration.
Format	Purified polyclonal antibody supplied in PBS with 0.09% (W/V) sodium azide. This antibody is purified through a protein A column, followed by peptide affinity purification.
Storage	Maintain refrigerated at 2-8°C for up to 2 weeks. For long term storage store at -20°C in small aliquots to prevent freeze-thaw cycles.
Precautions	FEM1B Antibody (C-Term) is for research use only and not for use in diagnostic or therapeutic procedures.

Protein Information

Name	FEM1B {ECO:0000303 PubMed:10623617, ECO:0000312 HGNC:HGNC:3649}
Function	Substrate-recognition component of a Cul2-RING (CRL2) E3 ubiquitin-protein ligase complex of the DesCEND (destruction via C-end

degrons) pathway, which recognizes a C-degron located at the extreme C terminus of target proteins, leading to their ubiquitination and degradation (PubMed:[29779948](#), PubMed:[33398168](#), PubMed:[33398170](#)). The C- degron recognized by the DescEND pathway is usually a motif of less than ten residues and can be present in full-length proteins, truncated proteins or proteolytically cleaved forms (PubMed:[29779948](#), PubMed:[33398168](#), PubMed:[33398170](#)). The CRL2(FEM1B) complex specifically recognizes proteins ending with -Gly-Leu-Asp-Arg, such as CDK5R1, leading to their ubiquitination and degradation (PubMed:[33398168](#), PubMed:[33398170](#)). Also acts as a regulator of the reductive stress response by mediating ubiquitination of reduced FNIP1: in response to reductive stress, the CRL2(FEM1B) complex specifically recognizes a conserved Cys degron in FNIP1 when this degron is reduced, leading to FNIP1 degradation and subsequent activation of mitochondria to recalibrate reactive oxygen species (ROS) (By similarity). Mechanistically, recognizes and binds reduced FNIP1 through two interface zinc ions, which act as a molecular glue that recruit reduced FNIP1 to FEM1B (By similarity). Promotes ubiquitination of GLI1, suppressing GLI1 transcriptional activator activity (PubMed:[24076122](#)). Promotes ubiquitination and degradation of ANKRD37 (By similarity). Promotes ubiquitination and degradation of SLBP (PubMed:[28118078](#)). Involved in apoptosis by acting as a death receptor-associated protein that mediates apoptosis (PubMed:[10542291](#)). Also involved in glucose homeostasis in pancreatic islet (By similarity). May also act as an adapter/mediator in replication stress-induced signaling that leads to the activation of CHEK1 (PubMed:[19330022](#)).

Cellular Location

Cytoplasm. Nucleus Note=In the nucleus, the protein level increased slightly after camptothecin (CPT) treatment (PubMed:[19330022](#)). Associated with chromatin (PubMed:[19330022](#)).

Tissue Location

Widely expressed (PubMed:[10542291](#)). Highly expressed in testis (PubMed:[10542291](#)). Weakly expressed in other tissues (PubMed:[10542291](#)).

Background

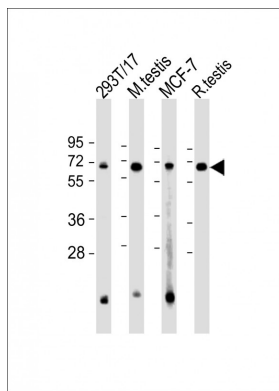
Component of an E3 ubiquitin-protein ligase complex, in which it may act as a substrate recognition subunit. Involved in apoptosis by acting as a death receptor-associated protein that mediates apoptosis. Also involved in glucose homeostasis in pancreatic islet. Functions as an adapter/mediator in replication stress-induced signaling that leads to the activation of CHEK1.

References

- Chan S.-L.,et al.J. Biol. Chem. 274:32461-32468(1999).
 Ventura-Holman T.,et al.Biochem. Biophys. Res. Commun. 267:317-320(2000).
 Ishikawa K.,et al.DNA Res. 4:307-313(1997).
 Nakajima D.,et al.DNA Res. 9:99-106(2002).
 Ota T.,et al.Nat. Genet. 36:40-45(2004).

Images

All lanes : Anti-FEM1B Antibody (C-Term) at 1:2000 dilution Lane 1: 293T/17 whole cell lysate Lane 2: mouse testis lysate Lane 3: MCF-7 whole cell lysate Lane 4: rat testis lysate Lysates/proteins at 20 µg per lane. Secondary Goat Anti-Rabbit IgG, (H+L), Peroxidase conjugated at



1/10000 dilution. Predicted band size : 70 kDa
Blocking/Dilution buffer: 5% NFDm/TBST.

Please note: All products are 'FOR RESEARCH USE ONLY. NOT FOR USE IN DIAGNOSTIC OR THERAPEUTIC PROCEDURES'.