

RPL4 Antibody (C-Term)

Purified Rabbit Polyclonal Antibody (Pab)

Catalog # AP22092b

Product Information

Application	WB, E
Primary Accession	P36578
Other Accession	Q28346 , Q9D8E6 , Q5RCR3 , P50878
Reactivity	Human, Rat, Mouse
Predicted	Mouse, Rat
Host	Rabbit
Clonality	polyclonal
Isotype	Rabbit IgG
Clone Names	RB55330
Calculated MW	47697

Additional Information

Gene ID	6124
Other Names	60S ribosomal protein L4, 60S ribosomal protein L1, RPL4, RPL1
Target/Specificity	This RPL4 antibody is generated from a rabbit immunized with a KLH conjugated synthetic peptide between 392-424 amino acids from human RPL4.
Dilution	WB~~1:2000 E~~Use at an assay dependent concentration.
Format	Purified polyclonal antibody supplied in PBS with 0.09% (W/V) sodium azide. This antibody is purified through a protein A column, followed by peptide affinity purification.
Storage	Maintain refrigerated at 2-8°C for up to 2 weeks. For long term storage store at -20°C in small aliquots to prevent freeze-thaw cycles.
Precautions	RPL4 Antibody (C-Term) is for research use only and not for use in diagnostic or therapeutic procedures.

Protein Information

Name	RPL4
Synonyms	RPL1
Function	Component of the large ribosomal subunit. The ribosome is a large ribonucleoprotein complex responsible for the synthesis of proteins in the

cell.

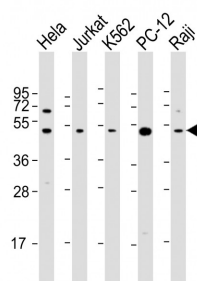
Cellular Location

Cytoplasm.

References

Bagni C.,et al.Biochim. Biophys. Acta 1216:475-478(1993).
Bagni C.,et al.Submitted (JAN-2004) to the EMBL/GenBank/DDBJ databases.
Kato S.,et al.Submitted (NOV-1993) to the EMBL/GenBank/DDBJ databases.
Yoshihama M.,et al.Genome Res. 12:379-390(2002).
Ota T.,et al.Nat. Genet. 36:40-45(2004).

Images



All lanes : Anti-RPL4 Antibody (C-Term) at 1:2000 dilution
Lane 1: HeLa whole cell lysate Lane 2: Jurkat whole cell lysate Lane 3: K562 whole cell lysate Lane 4: PC-12 whole cell lysate Lane 5: Raji whole cell lysate Lysates/proteins at 20 µg per lane. Secondary Goat Anti-Rabbit IgG, (H+L), Peroxidase conjugated at 1/10000 dilution. Predicted band size : 48 kDa Blocking/Dilution buffer: 5% NFDM/TBST.

Please note: All products are 'FOR RESEARCH USE ONLY. NOT FOR USE IN DIAGNOSTIC OR THERAPEUTIC PROCEDURES'.