

RPS27 Antibody (C-Term)

Purified Rabbit Polyclonal Antibody (Pab)

Catalog # AP22099b

Product Information

Application	WB, E
Primary Accession	P42677
Other Accession	Q3T0B7 , Q71UM5 , Q6ZWY3 , P24051 , Q2KHT7 , Q96564 , Q6ZWU9 , Q7RVN2 , Q5RBK1 , Q71TY3 , P47904
Reactivity	Human, Rat, Mouse
Predicted	Bovine, Human, Mouse, Rat
Host	Rabbit
Clonality	polyclonal
Isotype	Rabbit IgG
Clone Names	RB55894
Calculated MW	9461

Additional Information

Gene ID	6232
Other Names	40S ribosomal protein S27, Metallopan-stimulin 1, MPS-1, RPS27, MPS1
Target/Specificity	This RPS27 antibody is generated from a rabbit immunized with a KLH conjugated synthetic peptide between 46-76 amino acids from human RPS27.
Dilution	WB~~1:2000 E~~Use at an assay dependent concentration.
Format	Purified polyclonal antibody supplied in PBS with 0.09% (W/V) sodium azide. This antibody is purified through a protein A column, followed by peptide affinity purification.
Storage	Maintain refrigerated at 2-8°C for up to 2 weeks. For long term storage store at -20°C in small aliquots to prevent freeze-thaw cycles.
Precautions	RPS27 Antibody (C-Term) is for research use only and not for use in diagnostic or therapeutic procedures.

Protein Information

Name	RPS27 (HGNC:10416)
Synonyms	MPS1
Function	Component of the small ribosomal subunit (PubMed: 23636399 , PubMed: 8706699). The ribosome is a large ribonucleoprotein complex

responsible for the synthesis of proteins in the cell (PubMed:[23636399](#)). Required for proper rRNA processing and maturation of 18S rRNAs (PubMed:[25424902](#)). Part of the small subunit (SSU) processome, first precursor of the small eukaryotic ribosomal subunit. During the assembly of the SSU processome in the nucleolus, many ribosome biogenesis factors, an RNA chaperone and ribosomal proteins associate with the nascent pre-rRNA and work in concert to generate RNA folding, modifications, rearrangements and cleavage as well as targeted degradation of pre-ribosomal RNA by the RNA exosome (PubMed:[34516797](#)).

Cellular Location

Cytoplasm. Nucleus, nucleolus

Tissue Location

Expressed in a wide variety of actively proliferating cells and tumor tissues.

References

Fernandez-Pol J.A.,et al.J. Biol. Chem. 268:21198-21204(1993).

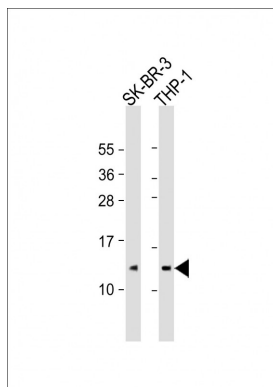
Tsui S.K.W.,et al.Biochem. Mol. Biol. Int. 40:611-616(1996).

Yoshihama M.,et al.Genome Res. 12:379-390(2002).

Ota T.,et al.Nat. Genet. 36:40-45(2004).

Gregory S.G.,et al.Nature 441:315-321(2006).

Images



All lanes : Anti-RPS27 Antibody (C-Term) at 1:2000 dilution
Lane 1: SK-BR-3 whole cell lysate Lane 2: THP-1 whole cell lysate
Lysates/proteins at 20 µg per lane. Secondary Goat Anti-Rabbit IgG, (H+L), Peroxidase conjugated at 1/10000 dilution. Predicted band size : 9 kDa
Blocking/Dilution buffer: 5% NFDM/TBST.

Please note: All products are 'FOR RESEARCH USE ONLY. NOT FOR USE IN DIAGNOSTIC OR THERAPEUTIC PROCEDURES'.