

UPP1 Antibody (C-Term)

Purified Rabbit Polyclonal Antibody (Pab)

Catalog # AP22101b

Product Information

Application	WB, E
Primary Accession	Q16831
Reactivity	Human, Mouse
Host	Rabbit
Clonality	polyclonal
Isotype	Rabbit IgG
Clone Names	RB55098
Calculated MW	33934

Additional Information

Gene ID	7378
Other Names	Uridine phosphorylase 1, UPase 1, UrdPase 1, 2.4.2.3, UPP1, UP
Target/Specificity	This UPP1 antibody is generated from a rabbit immunized with a KLH conjugated synthetic peptide between 205-237 amino acids from human UPP1.
Dilution	WB~~1:2000 E~~Use at an assay dependent concentration.
Format	Purified polyclonal antibody supplied in PBS with 0.09% (W/V) sodium azide. This antibody is purified through a protein A column, followed by peptide affinity purification.
Storage	Maintain refrigerated at 2-8°C for up to 2 weeks. For long term storage store at -20°C in small aliquots to prevent freeze-thaw cycles.
Precautions	UPP1 Antibody (C-Term) is for research use only and not for use in diagnostic or therapeutic procedures.

Protein Information

Name	UPP1 (HGNC:12576)
Synonyms	UP
Function	Catalyzes the reversible phosphorylytic cleavage of uridine to uracil and ribose-1-phosphate which can then be utilized as carbon and energy sources or in the rescue of pyrimidine bases for nucleotide synthesis (PubMed: 7488099). Shows broad substrate specificity and can also accept

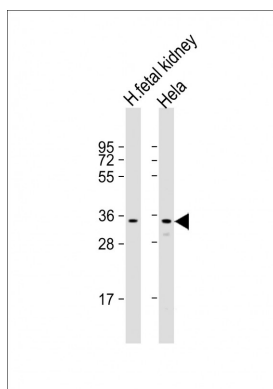
Background

Catalyzes the reversible phosphorylytic cleavage of uridine and deoxyuridine to uracil and ribose- or deoxyribose-1- phosphate. The produced molecules are then utilized as carbon and energy sources or in the rescue of pyrimidine bases for nucleotide synthesis.

References

Watanabe S.,et al.Biochem. Biophys. Res. Commun. 216:265-272(1995).
Kalnina N.,et al.Submitted (MAY-2003) to the EMBL/GenBank/DDBJ databases.
Mural R.J.,et al.Submitted (SEP-2005) to the EMBL/GenBank/DDBJ databases.
Burkard T.R.,et al.BMC Syst. Biol. 5:17-17(2011).
Roosild T.P.,et al.BMC Struct. Biol. 9:14-14(2009).

Images



All lanes : Anti-UPP1 Antibody (C-Term) at 1:2000 dilution
Lane 1: human fetal kidney lysate Lane 2: HeLa whole cell lysate
Lysates/proteins at 20 µg per lane. Secondary Goat Anti-Rabbit IgG, (H+L), Peroxidase conjugated at 1/10000 dilution. Predicted band size : 34 kDa
Blocking/Dilution buffer: 5% NFDM/TBST.

Please note: All products are 'FOR RESEARCH USE ONLY. NOT FOR USE IN DIAGNOSTIC OR THERAPEUTIC PROCEDURES'.