

S1 tag Antibody

Purified Rabbit Polyclonal Antibody (Pab)

Catalog # AP22118a

Product Information

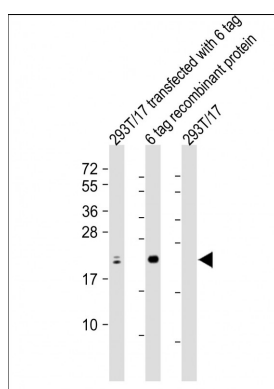
Application	WB, E
Primary Accession	NA
Host	Rabbit
Clonality	polyclonal
Isotype	Rabbit IgG
Clone Names	RB55945

Additional Information

Target/Specificity	This S1 tag antibody is generated from a rabbit immunized with a KLH conjugated synthetic peptide of S1 tag.
Dilution	WB~~1:2000 E~~Use at an assay dependent concentration.
Format	Purified polyclonal antibody supplied in PBS with 0.09% (W/V) sodium azide. This antibody is purified through a protein A column, followed by peptide affinity purification.
Storage	Maintain refrigerated at 2-8°C for up to 2 weeks. For long term storage store at -20°C in small aliquots to prevent freeze-thaw cycles.
Precautions	S1 tag Antibody is for research use only and not for use in diagnostic or therapeutic procedures.

Protein Information

Images



All lanes : Anti-S1 tag Antibody Antibody at 1:2000 dilution
Lane 1: 293T/17 transfected with 6 tag lysate
Lane 2: 6 tag recombinant protein lysate
Lane 3: 293T/17 whole cell lysate
Lysates/proteins at 20 µg per lane.
Secondary Goat Anti-Rabbit IgG, (H+L), Peroxidase conjugated at 1/10000 dilution. Predicted band size : 24 kDa
Blocking/Dilution buffer: 5% NFDM/TBST.

Please note: All products are 'FOR RESEARCH USE ONLY. NOT FOR USE IN DIAGNOSTIC OR THERAPEUTIC PROCEDURES'.