

# Cleaved PARP (Asp214) Antibody

Purified Rabbit Polyclonal Antibody (Pab)

Catalog # AP22119a

## Product Information

---

<b>Application</b>	WB, E
<b>Primary Accession</b>	<a href="#">P09874</a>
<b>Reactivity</b>	Human
<b>Host</b>	Rabbit
<b>Clonality</b>	polyclonal
<b>Isotype</b>	Rabbit IgG
<b>Clone Names</b>	RB43601

## Additional Information

---

<b>Target/Specificity</b>	This Cleaved PARP (Asp214) antibody is generated from a rabbit immunized with a KLH conjugated synthetic peptide between 205-225 amino acids from the human region of human Cleaved PARP (Asp214).
<b>Dilution</b>	WB~~1:500 E~~Use at an assay dependent concentration.
<b>Format</b>	Purified polyclonal antibody supplied in PBS with 0.09% (W/V) sodium azide. This antibody is purified through a protein A column, followed by peptide affinity purification.
<b>Storage</b>	Maintain refrigerated at 2-8°C for up to 2 weeks. For long term storage store at -20°C in small aliquots to prevent freeze-thaw cycles.
<b>Precautions</b>	Cleaved PARP (Asp214) Antibody is for research use only and not for use in diagnostic or therapeutic procedures.

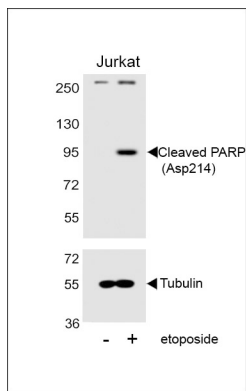
## Protein Information

---

## Images

---

Western blot analysis of lysates from Jurkat cell line, untreated or treated with etoposide, 25µM, using Cleaved PARP Antibody (RB43602)(upper) or Tubulin (lower).



## Citations

---

- [Isochamaejasmin induces toxic effects on Helicoverpa zea via DNA damage and mitochondria-associated apoptosis.](#)
- [PSMD7 downregulation induces apoptosis and suppresses tumorigenesis of esophageal squamous cell carcinoma the mTOR/p70S6K pathway.](#)

Please note: All products are 'FOR RESEARCH USE ONLY. NOT FOR USE IN DIAGNOSTIC OR THERAPEUTIC PROCEDURES'.