

GLT6D1 Antibody (Center)

Purified Rabbit Polyclonal Antibody (Pab)

Catalog # AP22123c

Product Information

Application	WB, E
Primary Accession	Q7Z4J2
Reactivity	Human
Host	Rabbit
Clonality	polyclonal
Isotype	Rabbit IgG
Clone Names	RB55291
Calculated MW	32608

Additional Information

Gene ID	360203
Other Names	Glycosyltransferase 6 domain-containing protein 1, 2.4.1.-, Galactosyltransferase family 6 domain-containing 1, GLT6D1, GLTDC1, GT6M7
Target/Specificity	This GLT6D1 antibody is generated from a rabbit immunized with a KLH conjugated synthetic peptide between 100-133 amino acids from the Central region of human GLT6D1.
Dilution	WB~~1:2000 E~~Use at an assay dependent concentration.
Format	Purified polyclonal antibody supplied in PBS with 0.09% (W/V) sodium azide. This antibody is purified through a protein A column, followed by peptide affinity purification.
Storage	Maintain refrigerated at 2-8°C for up to 2 weeks. For long term storage store at -20°C in small aliquots to prevent freeze-thaw cycles.
Precautions	GLT6D1 Antibody (Center) is for research use only and not for use in diagnostic or therapeutic procedures.

Protein Information

Name	GLT6D1
Synonyms	GLTDC1, GT6M7
Cellular Location	Membrane; Single-pass type II membrane protein
Tissue Location	Expressed in both healthy and inflamed gingival tissue samples at similar

levels, with higher expression in the gingival connective tissue compared to gingival epithelium. Strongest expression in testis, followed by leukocytes

References

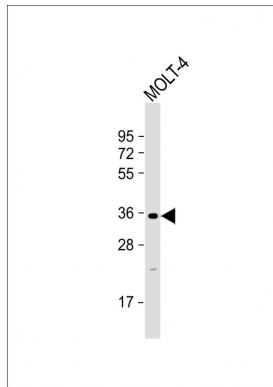
Shan Y.X.,et al.Submitted (JUL-2003) to the EMBL/GenBank/DDBJ databases.

Humphray S.J.,et al.Nature 429:369-374(2004).

Schaefer A.S.,et al.Hum. Mol. Genet. 19:553-562(2010).

Casals F.,et al.Glycobiology 19:583-591(2009).

Images



Anti-GLT6D1 Antibody (Center) at 1:2000 dilution + MOLT-4 whole cell lysate Lysates/proteins at 20 µg per lane. Secondary Goat Anti-Rabbit IgG, (H+L), Peroxidase conjugated at 1/10000 dilution. Predicted band size : 36 kDa Blocking/Dilution buffer: 5% NFDM/TBST.

Please note: All products are 'FOR RESEARCH USE ONLY. NOT FOR USE IN DIAGNOSTIC OR THERAPEUTIC PROCEDURES'.