

NUPL1 Antibody (Center)

Purified Rabbit Polyclonal Antibody (Pab)

Catalog # AP22133c

Product Information

Application	WB, E
Primary Accession	Q9BVL2
Other Accession	Q8R332 , P70581
Reactivity	Human, Rat, Mouse
Predicted	Mouse, Rat
Host	Rabbit
Clonality	polyclonal
Isotype	Rabbit IgG
Clone Names	RB55908
Calculated MW	60897

Additional Information

Gene ID	9818
Other Names	Nucleoporin p58/p45, Nucleoporin-like protein 1, NUPL1, KIAA0410
Target/Specificity	This NUPL1 antibody is generated from a rabbit immunized with a KLH conjugated synthetic peptide between 206-240 amino acids from the Central region of human NUPL1.
Dilution	WB~~1:2000 E~~Use at an assay dependent concentration.
Format	Purified polyclonal antibody supplied in PBS with 0.09% (W/V) sodium azide. This antibody is purified through a protein A column, followed by peptide affinity purification.
Storage	Maintain refrigerated at 2-8°C for up to 2 weeks. For long term storage store at -20°C in small aliquots to prevent freeze-thaw cycles.
Precautions	NUPL1 Antibody (Center) is for research use only and not for use in diagnostic or therapeutic procedures.

Protein Information

Name	NUP58 (HGNC:20261)
Synonyms	KIAA0410, NUPL1
Function	Component of the nuclear pore complex, a complex required for the trafficking across the nuclear membrane.

Cellular Location

Nucleus, nuclear pore complex {ECO:0000250|UniProtKB:P70581}. Nucleus membrane {ECO:0000250|UniProtKB:P70581}; Peripheral membrane protein {ECO:0000250|UniProtKB:P70581}; Cytoplasmic side {ECO:0000250|UniProtKB:P70581}. Nucleus membrane {ECO:0000250|UniProtKB:P70581}; Peripheral membrane protein {ECO:0000250|UniProtKB:P70581}; Nucleoplasmic side {ECO:0000250|UniProtKB:P70581}. Note=Biased towards cytoplasmic side
Central region of the nuclear pore complex, within the transporter {ECO:0000250|UniProtKB:P70581}

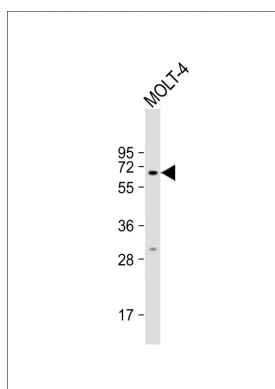
Background

Component of the nuclear pore complex, a complex required for the trafficking across the nuclear membrane.

References

Ishikawa K.,et al.DNA Res. 4:307-313(1997).
Ota T.,et al.Nat. Genet. 36:40-45(2004).
Dunham A.,et al.Nature 428:522-528(2004).
Olsen J.V.,et al.Sci. Signal. 3:RA3-RA3(2010).
Burkard T.R.,et al.BMC Syst. Biol. 5:17-17(2011).

Images



Anti-NUPL1 Antibody (Center) at 1:2000 dilution + MOLT-4 whole cell lysate Lysates/proteins at 20 µg per lane. Secondary Goat Anti-Rabbit IgG, (H+L), Peroxidase conjugated at 1/10000 dilution. Predicted band size : 61 kDa Blocking/Dilution buffer: 5% NFDM/TBST.

Please note: All products are 'FOR RESEARCH USE ONLY. NOT FOR USE IN DIAGNOSTIC OR THERAPEUTIC PROCEDURES'.