

ME1 Antibody (N-Term)

Purified Rabbit Polyclonal Antibody (Pab)

Catalog # AP22134a

Product Information

Application	WB, E
Primary Accession	P48163
Reactivity	Human, Rat
Host	Rabbit
Clonality	polyclonal
Isotype	Rabbit IgG
Clone Names	RB55906
Calculated MW	64150

Additional Information

Gene ID	4199
Other Names	NADP-dependent malic enzyme, NADP-ME, 1.1.1.40, Malic enzyme 1, ME1
Target/Specificity	This ME1 antibody is generated from a rabbit immunized with a KLH conjugated synthetic peptide between 37-70 amino acids from human ME1.
Dilution	WB~~1:2000 E~~Use at an assay dependent concentration.
Format	Purified polyclonal antibody supplied in PBS with 0.09% (W/V) sodium azide. This antibody is purified through a protein A column, followed by peptide affinity purification.
Storage	Maintain refrigerated at 2-8°C for up to 2 weeks. For long term storage store at -20°C in small aliquots to prevent freeze-thaw cycles.
Precautions	ME1 Antibody (N-Term) is for research use only and not for use in diagnostic or therapeutic procedures.

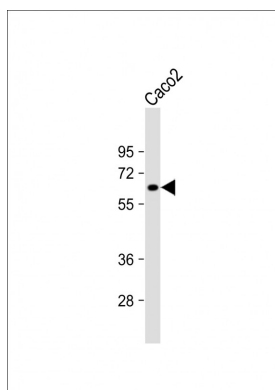
Protein Information

Name	ME1 (HGNC:6983)
Function	Catalyzes the oxidative decarboxylation of (S)-malate in the presence of NADP(+) and divalent metal ions, and decarboxylation of oxaloacetate.
Cellular Location	Cytoplasm.
Tissue Location	Expressed in all tissues tested including liver, placenta and white adipose tissue.

References

Loeber G.,et al.FEBS Lett. 344:181-186(1994).
Gonzalez-Manchon C.,et al.Gene 159:255-260(1995).
Ota T.,et al.Nat. Genet. 36:40-45(2004).
Totoki Y.,et al.Submitted (APR-2005) to the EMBL/GenBank/DDBJ databases.
Mungall A.J.,et al.Nature 425:805-811(2003).

Images



Anti-ME1 Antibody (N-Term) at 1:2000 dilution + Caco2 whole cell lysate Lysates/proteins at 20 µg per lane. Secondary Goat Anti-Rabbit IgG, (H+L), Peroxidase conjugated at 1/10000 dilution. Predicted band size : 64 kDa Blocking/Dilution buffer: 5% NFDM/TBST.

Please note: All products are 'FOR RESEARCH USE ONLY. NOT FOR USE IN DIAGNOSTIC OR THERAPEUTIC PROCEDURES'.