

# CHTF8 Antibody (C-Term)

Purified Rabbit Polyclonal Antibody (Pab)

Catalog # AP22136b

## Product Information

---

<b>Application</b>	WB, E
<b>Primary Accession</b>	<a href="#">P0CG12</a>
<b>Reactivity</b>	Human
<b>Host</b>	Rabbit
<b>Clonality</b>	polyclonal
<b>Isotype</b>	Rabbit IgG
<b>Clone Names</b>	RB55911
<b>Calculated MW</b>	51391

## Additional Information

---

<b>Gene ID</b>	113455421
<b>Other Names</b>	Chromosome transmission fidelity protein 8 homolog isoform 2, Decreased expression in renal and prostate cancer protein, CHTF8, DERP
<b>Target/Specificity</b>	This CHTF8 antibody is generated from a rabbit immunized with a KLH conjugated synthetic peptide between 344-377 amino acids from human CHTF8.
<b>Dilution</b>	WB~1:2000 E~Use at an assay dependent concentration.
<b>Format</b>	Purified polyclonal antibody supplied in PBS with 0.09% (W/V) sodium azide. This antibody is purified through a protein A column, followed by peptide affinity purification.
<b>Storage</b>	Maintain refrigerated at 2-8°C for up to 2 weeks. For long term storage store at -20°C in small aliquots to prevent freeze-thaw cycles.
<b>Precautions</b>	CHTF8 Antibody (C-Term) is for research use only and not for use in diagnostic or therapeutic procedures.

## Protein Information

---

<b>Name</b>	DERP ( <a href="#">HGNC:54084</a> )
<b>Function</b>	Potential tumor suppressor. Inhibits prostate tumor cell growth, when overexpressed.
<b>Cellular Location</b>	Nucleus.

## Tissue Location

Ubiquitously expressed, with abundant expression in kidney, skeletal muscle, testis, liver, ovary, and heart and moderate expression in prostate. Expression is significantly reduced in renal and prostate tumors. No differential expression in breast cancer cells, between lobular carcinoma and normal lobules

## Background

---

Potential tumor suppressor. Inhibits prostate tumor cell growth, when overexpressed.

## References

---

Bechtel S.,et al.BMC Genomics 8:399-399(2007).

Martin J.,et al.Nature 432:988-994(2004).

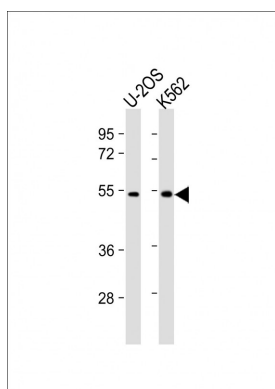
Mural R.J.,et al.Submitted (JUL-2005) to the EMBL/GenBank/DDBJ databases.

Sun M.,et al.Mol. Med. 8:655-663(2002).

Green A.R.,et al.Breast Cancer Res. Treat. 113:59-66(2009).

## Images

---



All lanes : Anti-CHTF8 Antibody (C-Term) at 1:2000 dilution Lane 1: U-2OS whole cell lysate Lane 2: K562 whole cell lysate Lysates/proteins at 20 µg per lane. Secondary Goat Anti-Rabbit IgG, (H+L), Peroxidase conjugated at 1/10000 dilution. Predicted band size : 51 kDa Blocking/Dilution buffer: 5% NFDM/TBST.

Please note: All products are 'FOR RESEARCH USE ONLY. NOT FOR USE IN DIAGNOSTIC OR THERAPEUTIC PROCEDURES'.