

PCSK1 Antibody (C-Term)

Purified Rabbit Polyclonal Antibody (Pab)

Catalog # AP22139b

Product Information

| | |
|--------------------------|------------------------|
| Application | WB, FC, E |
| Primary Accession | P29120 |
| Reactivity | Human, Rat, Mouse |
| Host | Rabbit |
| Clonality | polyclonal |
| Isotype | Rabbit IgG |
| Clone Names | RB55298 |
| Calculated MW | 84152 |

Additional Information

| | |
|---------------------------|--|
| Gene ID | 5122 |
| Other Names | Neuroendocrine convertase 1, NEC 1, 3.4.21.93, Prohormone convertase 1, Proprotein convertase 1, PC1, PCSK1, NEC1 |
| Target/Specificity | This PCSK1 antibody is generated from a rabbit immunized with a KLH conjugated synthetic peptide between 682-715 amino acids from human PCSK1. |
| Dilution | WB~~1:2000 FC~~1:25 E~~Use at an assay dependent concentration. |
| Format | Purified polyclonal antibody supplied in PBS with 0.09% (W/V) sodium azide. This antibody is purified through a protein A column, followed by peptide affinity purification. |
| Storage | Maintain refrigerated at 2-8°C for up to 2 weeks. For long term storage store at -20°C in small aliquots to prevent freeze-thaw cycles. |
| Precautions | PCSK1 Antibody (C-Term) is for research use only and not for use in diagnostic or therapeutic procedures. |

Protein Information

| | |
|-----------------|---|
| Name | PCSK1 |
| Synonyms | NEC1 |
| Function | Involved in the processing of hormone and other protein precursors at sites comprised of pairs of basic amino acid residues. Substrates include POMC, renin, enkephalin, dynorphin, somatostatin, insulin and AGRP. |

Cellular Location

Cytoplasmic vesicle, secretory vesicle. Note=Localized in the secretion granules

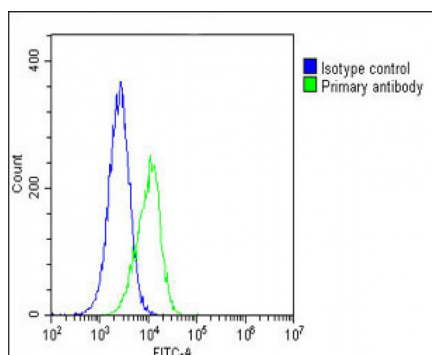
Background

Involved in the processing of hormone and other protein precursors at sites comprised of pairs of basic amino acid residues. Substrates include POMC, renin, enkephalin, dynorphin, somatostatin and insulin.

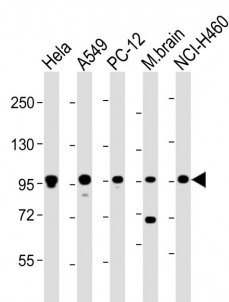
References

Creemers J.W.M.,et al.FEBS Lett. 300:82-88(1992).
Seidah N.G.,et al.DNA Cell Biol. 11:283-289(1992).
Ohagi S.,et al.Diabetes 45:897-901(1996).
Ota T.,et al.Nat. Genet. 36:40-45(2004).
Schmutz J.,et al.Nature 431:268-274(2004).

Images



Overlay histogram showing A549 cells stained with AP22139b(green line). The cells were fixed with 2% paraformaldehyde (10 min) and then permeabilized with 90% methanol for 10 min. The cells were then incubated in 2% bovine serum albumin to block non-specific protein-protein interactions followed by the antibody (AP22139b, 1:25 dilution) for 60 min at 37°C. The secondary antibody used was Goat-Anti-Rabbit IgG, DyLight® 488 Conjugated Highly Cross-Adsorbed(OH191631) at 1/200 dilution for 40 min at 37°C. Isotype control antibody (blue line) was rabbit IgG1 (1µg/1x10⁶ cells) used under the same conditions. Acquisition of >10, 000 events was performed.



All lanes : Anti-PCSK1 Antibody (C-Term) at 1:2000 dilution Lane 1: HeLa whole cell lysate Lane 2: A549 whole cell lysate Lane 3: PC-12 whole cell lysate Lane 4: mouse brain lysate Lane 5: NCI-H460 whole cell lysate Lysates/proteins at 20 µg per lane. Secondary Goat Anti-Rabbit IgG, (H+L), Peroxidase conjugated at 1/10000 dilution. Predicted band size : 84 kDa Blocking/Dilution buffer: 5% NFDM/TBST.

Please note: All products are 'FOR RESEARCH USE ONLY. NOT FOR USE IN DIAGNOSTIC OR THERAPEUTIC PROCEDURES'.