

FLOT2 Antibody (C-Term)

Purified Rabbit Polyclonal Antibody (Pab)

Catalog # AP22149b

Product Information

Application	WB, E
Primary Accession	Q14254
Other Accession	A6QLR4 , Q60634 , Q9Z2S9
Reactivity	Human, Rat, Mouse
Predicted	Bovine, Mouse, Rat
Host	Rabbit
Clonality	polyclonal
Isotype	Rabbit IgG
Clone Names	RB56189
Calculated MW	47064

Additional Information

Gene ID	2319
Other Names	Flotillin-2, Epidermal surface antigen, ESA, Membrane component chromosome 17 surface marker 1, FLOT2, ESA1, M17S1
Target/Specificity	This FLOT2 antibody is generated from a rabbit immunized with a KLH conjugated synthetic peptide between 322-356 amino acids from human FLOT2.
Dilution	WB~~1:2000 E~~Use at an assay dependent concentration.
Format	Purified polyclonal antibody supplied in PBS with 0.09% (W/V) sodium azide. This antibody is purified through a protein A column, followed by peptide affinity purification.
Storage	Maintain refrigerated at 2-8°C for up to 2 weeks. For long term storage store at -20°C in small aliquots to prevent freeze-thaw cycles.
Precautions	FLOT2 Antibody (C-Term) is for research use only and not for use in diagnostic or therapeutic procedures.

Protein Information

Name	FLOT2
Synonyms	ESA1, M17S1
Function	May act as a scaffolding protein within caveolar membranes, functionally

participating in formation of caveolae or caveolae-like vesicles. May be involved in epidermal cell adhesion and epidermal structure and function.

Cellular Location

Cell membrane; Peripheral membrane protein. Membrane, caveola; Peripheral membrane protein. Endosome Membrane; Lipid-anchor.
Note=Membrane- associated protein of caveolae

Tissue Location

In skin, expressed in epidermis and epidermal appendages but not in dermis. Expressed in all layers of the epidermis except the basal layer. In hair follicles, expressed in the suprabasal layer but not the basal layer. Also expressed in melanoma and carcinoma cell lines, fibroblasts and foreskin melanocytes

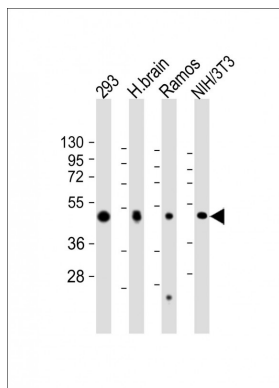
Background

May act as a scaffolding protein within caveolar membranes, functionally participating in formation of caveolae or caveolae-like vesicles. May be involved in epidermal cell adhesion and epidermal structure and function.

References

Zody M.C.,et al.Nature 440:1045-1049(2006).
Schroeder W.T.,et al.J. Biol. Chem. 269:19983-19991(1994).
Kalnine N.,et al.Submitted (MAY-2003) to the EMBL/GenBank/DDBJ databases.
Gorbea C.,et al.J. Biol. Chem. 285:31616-31633(2010).
Burkard T.R.,et al.BMC Syst. Biol. 5:17-17(2011).

Images



All lanes : Anti-FLOT2 Antibody (C-Term) at 1:2000 dilution
Lane 1: 293 whole cell lysate Lane 2: human brain lysate
Lane 3: Ramos whole cell lysate Lane 4: NIH/3T3 whole cell lysate
Lysates/proteins at 20 µg per lane. Secondary Goat Anti-Rabbit IgG, (H+L), Peroxidase conjugated at 1/10000 dilution. Predicted band size : 47 kDa
Blocking/Dilution buffer: 5% NFDm/TBST.

Please note: All products are 'FOR RESEARCH USE ONLY. NOT FOR USE IN DIAGNOSTIC OR THERAPEUTIC PROCEDURES'.