

ARHGEF7 Antibody (C-Term)

Purified Rabbit Polyclonal Antibody (Pab)

Catalog # AP22153b

Product Information

Application	WB, E
Primary Accession	Q14155
Other Accession	Q9ES28
Reactivity	Human, Mouse
Predicted	Mouse
Host	Rabbit
Clonality	polyclonal
Isotype	Rabbit IgG
Clone Names	RB56222
Calculated MW	90012

Additional Information

Gene ID	8874
Other Names	Rho guanine nucleotide exchange factor 7, Beta-Pix, COOL-1, PAK-interacting exchange factor beta, p85, ARHGEF7, COOL1, KIAA0142, P85SPR, PAK3BP, PIXB
Target/Specificity	This ARHGEF7 antibody is generated from a rabbit immunized with a KLH conjugated synthetic peptide between 654-688 amino acids from human ARHGEF7.
Dilution	WB~~1:2000 E~~Use at an assay dependent concentration.
Format	Purified polyclonal antibody supplied in PBS with 0.09% (W/V) sodium azide. This antibody is purified through a protein A column, followed by peptide affinity purification.
Storage	Maintain refrigerated at 2-8°C for up to 2 weeks. For long term storage store at -20°C in small aliquots to prevent freeze-thaw cycles.
Precautions	ARHGEF7 Antibody (C-Term) is for research use only and not for use in diagnostic or therapeutic procedures.

Protein Information

Name	ARHGEF7
Synonyms	COOL1, KIAA0142, P85SPR, PAK3BP, PIXB

Function	Acts as a RAC1 guanine nucleotide exchange factor (GEF) and can induce membrane ruffling. Functions in cell migration, attachment and cell spreading. Promotes targeting of RAC1 to focal adhesions (By similarity). May function as a positive regulator of apoptosis. Downstream of NMDA receptors and CaMKK-CaMK1 signaling cascade, promotes the formation of spines and synapses in hippocampal neurons.
Cellular Location	Cell junction, focal adhesion. Cell projection, ruffle. Cytoplasm, cell cortex Cell projection, lamellipodium. Note=Detected at cell adhesions. A small proportion is detected at focal adhesions

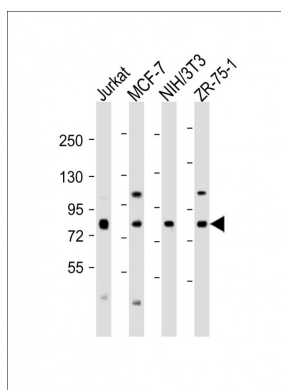
Background

Acts as a RAC1 guanine nucleotide exchange factor (GEF) and can induce membrane ruffling. Functions in cell migration, attachment and cell spreading. Promotes targeting of RAC1 to focal adhesions (By similarity). May function as a positive regulator of apoptosis. Downstream of NMDA receptors and CaMKK-CaMK1 signaling cascade, promotes the formation of spines and synapses in hippocampal neurons.

References

Nagase T.,et al.DNA Res. 2:167-174(1995).
 Bagrodia S.,et al.J. Biol. Chem. 273:23633-23636(1998).
 Bechtel S.,et al.BMC Genomics 8:399-399(2007).
 Dunham A.,et al.Nature 428:522-528(2004).
 Mural R.J.,et al.Submitted (JUL-2005) to the EMBL/GenBank/DDBJ databases.

Images



All lanes : Anti-ARHGEF7 Antibody (C-Term) at 1:2000 dilution
 Lane 1: Jurkat whole cell lysate
 Lane 2: MCF-7 whole cell lysate
 Lane 3: NIH/3T3 whole cell lysate
 Lane 4: ZR-75-1 whole cell lysate
 Lysates/proteins at 20 µg per lane. Secondary Goat Anti-Rabbit IgG, (H+L), Peroxidase conjugated at 1/10000 dilution. Predicted band size : 90 kDa
 Blocking/Dilution buffer: 5% NFDM/TBST.

Please note: All products are 'FOR RESEARCH USE ONLY. NOT FOR USE IN DIAGNOSTIC OR THERAPEUTIC PROCEDURES'.