

# E2 tag Antibody

Purified Rabbit Polyclonal Antibody (Pab)

Catalog # AP22158a

## Product Information

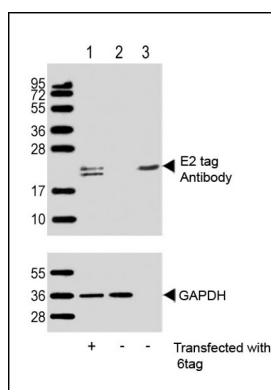
Application	WB, E
Primary Accession	<a href="#">NA</a>
Host	Rabbit
Clonality	polyclonal
Isotype	Rabbit IgG
Clone Names	RB55959

## Additional Information

Target/Specificity	This E2 tag antibody is generated from a rabbit immunized with a KLH conjugated synthetic peptide of E2 tag.
Dilution	WB~~1:1000 E~~Use at an assay dependent concentration.
Format	Purified polyclonal antibody supplied in PBS with 0.09% (W/V) sodium azide. This antibody is purified through a protein A column, followed by peptide affinity purification.
Storage	Maintain refrigerated at 2-8°C for up to 2 weeks. For long term storage store at -20°C in small aliquots to prevent freeze-thaw cycles.
Precautions	E2 tag Antibody is for research use only and not for use in diagnostic or therapeutic procedures.

## Protein Information

## Images



All lanes : Anti-E2 tag Antibody at 1:1000 dilution (upper) or GAPDH (lower) Lane 1: 293T/17 transfected with 6tag lysate (1ug) Lane 2: Non-transfected 293T/17 lysate (1ug) Lane 3: 6tag recombinant protein lysate (0.5ug) Secondary Goat Anti-Rabbit IgG, (H+L), Peroxidase conjugated at 1/10000 dilution. Predicted band size : 21 kDa Blocking/Dilution buffer: 5% NFDM/TBST.

Please note: All products are 'FOR RESEARCH USE ONLY. NOT FOR USE IN DIAGNOSTIC OR THERAPEUTIC PROCEDURES'.