

# PTH1R Antibody (N-Term)

Purified Rabbit Polyclonal Antibody (Pab)

Catalog # AP22170a

## Product Information

---

Application	WB, E
Primary Accession	<a href="#">Q03431</a>
Other Accession	<a href="#">Q5RAQ1</a>
Reactivity	Human, Rat, Mouse
Host	Rabbit
Clonality	polyclonal
Isotype	Rabbit IgG
Clone Names	RB56260
Calculated MW	66361

## Additional Information

---

Gene ID	5745
Other Names	Parathyroid hormone/parathyroid hormone-related peptide receptor, PTH/PTHrP type I receptor, PTH/PTHr receptor, Parathyroid hormone 1 receptor, PTH1 receptor, PTH1R, PTHR, PTHR1
Target/Specificity	This PTH1R antibody is generated from a rabbit immunized with a KLH conjugated synthetic peptide between 52-86 amino acids from human PTH1R.
Dilution	WB~~1:2000 E~~Use at an assay dependent concentration.
Format	Purified polyclonal antibody supplied in PBS with 0.09% (W/V) sodium azide. This antibody is purified through a protein A column, followed by peptide affinity purification.
Storage	Maintain refrigerated at 2-8°C for up to 2 weeks. For long term storage store at -20°C in small aliquots to prevent freeze-thaw cycles.
Precautions	PTH1R Antibody (N-Term) is for research use only and not for use in diagnostic or therapeutic procedures.

## Protein Information

---

Name	PTH1R {ECO:0000303   PubMed:10913300, ECO:0000312   HGNC:HGNC:9608}
Function	G-protein-coupled receptor for parathyroid hormone (PTH) and for parathyroid hormone-related peptide (PTHrP) (PubMed: <a href="#">10913300</a> , PubMed: <a href="#">18375760</a> , PubMed: <a href="#">19674967</a> , PubMed: <a href="#">27160269</a> , PubMed: <a href="#">30975883</a> , PubMed: <a href="#">35932760</a> , PubMed: <a href="#">8397094</a> ). Ligand binding

causes a conformation change that triggers signaling via guanine nucleotide-binding proteins (G proteins) and modulates the activity of downstream effectors, such as adenylate cyclase (cAMP) (PubMed:[30975883](#), PubMed:[35932760](#)). PTH1R is coupled to G(s) G alpha proteins and mediates activation of adenylate cyclase activity (PubMed:[20172855](#), PubMed:[30975883](#), PubMed:[35932760](#)). PTHLH dissociates from PTH1R more rapidly than PTH; as consequence, the cAMP response induced by PTHLH decays faster than the response induced by PTH (PubMed:[35932760](#)).

**Cellular Location**

Cell membrane; Multi-pass membrane protein

**Tissue Location**

Expressed in most tissues. Most abundant in kidney, bone and liver.

## Background

---

This is a receptor for parathyroid hormone and for parathyroid hormone-related peptide. The activity of this receptor is mediated by G proteins which activate adenylyl cyclase and also a phosphatidylinositol-calcium second messenger system.

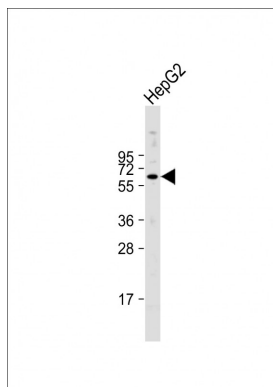
## References

---

Schipani E.,et al.Endocrinology 132:2157-2165(1993).  
Schneider H.,et al.Eur. J. Pharmacol. 246:149-155(1993).  
Schipani E.,et al.J. Clin. Endocrinol. Metab. 80:1611-1621(1995).  
Levine M.A.,et al.Submitted (NOV-1994) to the EMBL/GenBank/DDBJ databases.  
King M.M.,et al.Submitted (OCT-2003) to the EMBL/GenBank/DDBJ databases.

## Images

---



Anti-PTH1R Antibody (N-Term) at 1:2000 dilution + HepG2 whole cell lysate Lysates/proteins at 20 µg per lane. Secondary Goat Anti-Rabbit IgG, (H+L), Peroxidase conjugated at 1/10000 dilution. Predicted band size : 66 kDa Blocking/Dilution buffer: 5% NFDM/TBST.

Please note: All products are 'FOR RESEARCH USE ONLY. NOT FOR USE IN DIAGNOSTIC OR THERAPEUTIC PROCEDURES'.