

LRCH4 Antibody (Center)

Purified Rabbit Polyclonal Antibody (Pab)

Catalog # AP22171c

Product Information

Application	WB, E
Primary Accession	O75427
Reactivity	Human
Host	Rabbit
Clonality	polyclonal
Isotype	Rabbit IgG
Clone Names	RB56329
Calculated MW	73450

Additional Information

Gene ID	4034
Other Names	Leucine-rich repeat and calponin homology domain-containing protein 4, Leucine-rich repeat neuronal protein 4, Leucine-rich neuronal protein, LRCH4, LRN, LRRN1, LRRN4
Target/Specificity	This LRCH4 antibody is generated from a rabbit immunized with a KLH conjugated synthetic peptide between 305-348 amino acids from the Central region of human LRCH4.
Dilution	WB~~1:2000 E~~Use at an assay dependent concentration.
Format	Purified polyclonal antibody supplied in PBS with 0.09% (W/V) sodium azide. This antibody is purified through a protein A column, followed by peptide affinity purification.
Storage	Maintain refrigerated at 2-8°C for up to 2 weeks. For long term storage store at -20°C in small aliquots to prevent freeze-thaw cycles.
Precautions	LRCH4 Antibody (Center) is for research use only and not for use in diagnostic or therapeutic procedures.

Protein Information

Name	LRCH4 (HGNC:6691)
Synonyms	LRN, LRRN1, LRRN4
Function	Accessory protein that regulates signaling by multiple TLRs, acting as a broad-spanning regulator of the innate immune response. In macrophages,

binds LPS and promotes proper docking of LPS in lipid raft membrane. May be required for lipid raft maintenance.

Cellular Location

Cell membrane {ECO:0000250 | UniProtKB:Q921G6}; Single-pass membrane protein

References

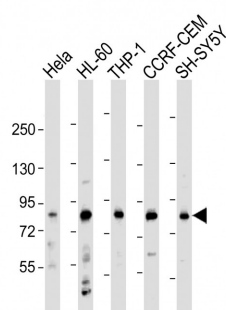
Gloeckner G.,et al.Genome Res. 8:1060-1073(1998).

Scherer S.W.,et al.Science 300:767-772(2003).

Dephoure N.,et al.Proc. Natl. Acad. Sci. U.S.A. 105:10762-10767(2008).

Mayya V.,et al.Sci. Signal. 2:RA46-RA46(2009).

Images



All lanes : Anti-LRCH4 Antibody (Center) at 1:2000 dilution
Lane 1: Hela whole cell lysate Lane 2: HL-60 whole cell lysate Lane 3: THP-1 whole cell lysate Lane 4: CCRF-CEM whole cell lysate Lane 5: SH-SY5Y whole cell lysate
Lysates/proteins at 20 µg per lane. Secondary Goat Anti-Rabbit IgG, (H+L), Peroxidase conjugated at 1/10000 dilution. Predicted band size : 74 kDa Blocking/Dilution buffer: 5% NFDM/TBST.

Please note: All products are 'FOR RESEARCH USE ONLY. NOT FOR USE IN DIAGNOSTIC OR THERAPEUTIC PROCEDURES'.