

# PARP10 Antibody (Center)

Purified Rabbit Polyclonal Antibody (Pab)

Catalog # AP22182c

## Product Information

---

Application	WB, E
Primary Accession	<a href="#">Q53GL7</a>
Reactivity	Human
Host	Rabbit
Clonality	polyclonal
Isotype	Rabbit IgG
Clone Names	RB56269
Calculated MW	109998

## Additional Information

---

Gene ID	84875
Other Names	Poly [ADP-ribose] polymerase 10, PARP-10, 2.4.2.30, ADP-ribosyltransferase diphtheria toxin-like 10, ARTD10, PARP10
Target/Specificity	This PARP10 antibody is generated from a rabbit immunized with a KLH conjugated synthetic peptide between 565-597 amino acids from the Central region of human PARP10.
Dilution	WB~~1:2000 E~~Use at an assay dependent concentration.
Format	Purified polyclonal antibody supplied in PBS with 0.09% (W/V) sodium azide. This antibody is purified through a protein A column, followed by peptide affinity purification.
Storage	Maintain refrigerated at 2-8°C for up to 2 weeks. For long term storage store at -20°C in small aliquots to prevent freeze-thaw cycles.
Precautions	PARP10 Antibody (Center) is for research use only and not for use in diagnostic or therapeutic procedures.

## Protein Information

---

Name	PARP10 ( <a href="#">HGNC:25895</a> )
Function	ADP-ribosyltransferase that mediates mono-ADP-ribosylation of glutamate and aspartate residues on target proteins (PubMed: <a href="#">18851833</a> , PubMed: <a href="#">23332125</a> , PubMed: <a href="#">23474714</a> , PubMed: <a href="#">25043379</a> ). In contrast to PARP1 and PARP2, it is not able to mediate poly-ADP-ribosylation (PubMed: <a href="#">18851833</a> ). Catalyzes mono-ADP-ribosylation of GSK3B, leading to

negatively regulate GSK3B kinase activity (PubMed:[23332125](#)). Involved in translesion DNA synthesis in response to DNA damage via its interaction with PCNA (PubMed:[24695737](#)).

**Cellular Location**

Nucleus, nucleolus. Cytoplasm. Note=Shuttles between the nuclear and cytoplasmic compartment (PubMed:15674325). A subpopulation concentrates in the nucleolus during late G1/S phase (PubMed:15674325)

**Tissue Location**

Highly expressed in spleen and thymus (PubMed:15674325). Intermediate levels in liver, kidney, pancreas, prostate, testis, ovary, intestine, and leukocytes (PubMed:15674325) Low expression in heart, brain, placenta, lung, skeletal muscle, and colon (PubMed:15674325).

## Background

---

May play a role in cell proliferation. May be required for the maintenance of cell cycle progression.

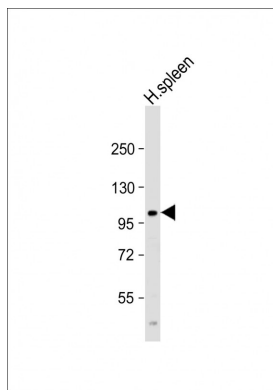
## References

---

Ota T.,et al.Nat. Genet. 36:40-45(2004).  
Suzuki Y.,et al.Submitted (APR-2005) to the EMBL/GenBank/DDBJ databases.  
Yu M.,et al.Oncogene 24:1982-1993(2005).  
Chou H.Y.,et al.J. Biol. Chem. 281:15201-15207(2006).  
Choudhary C.,et al.Science 325:834-840(2009).

## Images

---



Anti-PARP10 Antibody (Center) at 1:2000 dilution + human spleen lysate Lysates/proteins at 20 µg per lane. Secondary Goat Anti-Rabbit IgG, (H+L), Peroxidase conjugated at 1/10000 dilution. Predicted band size : 110 kDa Blocking/Dilution buffer: 5% NFDM/TBST.

Please note: All products are 'FOR RESEARCH USE ONLY. NOT FOR USE IN DIAGNOSTIC OR THERAPEUTIC PROCEDURES'.