

ARF4 Antibody (Center)

Purified Rabbit Polyclonal Antibody (Pab)

Catalog # AP22186c

Product Information

Application	WB, E
Primary Accession	P18085
Other Accession	Q5RCF1
Reactivity	Human, Rat, Mouse
Host	Rabbit
Clonality	polyclonal
Isotype	Rabbit IgG
Clone Names	RB56313
Calculated MW	20511

Additional Information

Gene ID	378
Other Names	ADP-ribosylation factor 4, ARF4, ARF2
Target/Specificity	This ARF4 antibody is generated from a rabbit immunized with a KLH conjugated synthetic peptide between 72-106 amino acids from the Central region of human ARF4.
Dilution	WB~~1:2000 E~~Use at an assay dependent concentration.
Format	Purified polyclonal antibody supplied in PBS with 0.09% (W/V) sodium azide. This antibody is purified through a protein A column, followed by peptide affinity purification.
Storage	Maintain refrigerated at 2-8°C for up to 2 weeks. For long term storage store at -20°C in small aliquots to prevent freeze-thaw cycles.
Precautions	ARF4 Antibody (Center) is for research use only and not for use in diagnostic or therapeutic procedures.

Protein Information

Name	ARF4
Synonyms	ARF2
Function	GTP-binding protein that functions as an allosteric activator of the cholera toxin catalytic subunit, an ADP-ribosyltransferase. Involved in protein trafficking; may modulate vesicle budding and uncoating within the Golgi

apparatus. Part of the ciliary targeting complex containing Rab11, ASAP1, Rabin8/RAB3IP, RAB11FIP3 and ARF4, which direct preciliary vesicle trafficking to mother centriole and ciliogenesis initiation (PubMed:[25673879](#)).

Cellular Location

Golgi apparatus. Membrane; Lipid-anchor

Background

GTP-binding protein that functions as an allosteric activator of the cholera toxin catalytic subunit, an ADP-ribosyltransferase. Involved in protein trafficking; may modulate vesicle budding and uncoating within the Golgi apparatus.

References

Monaco L.,et al.Proc. Natl. Acad. Sci. U.S.A. 87:2206-2210(1990).

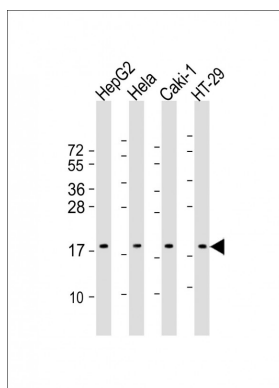
Kahn R.A.,et al.J. Biol. Chem. 266:2606-2614(1991).

Lebeda R.A.,et al.Gene 237:209-214(1999).

Puhl H.L. III,et al.Submitted (MAR-2002) to the EMBL/GenBank/DDBJ databases.

Ota T.,et al.Nat. Genet. 36:40-45(2004).

Images



All lanes : Anti-ARF4 Antibody (Center) at 1:2000 dilution
Lane 1: HepG2 whole cell lysate Lane 2: HeLa whole cell lysate Lane 3: Caki-1 whole cell lysate Lane 4: HT-29 whole cell lysate Lysates/proteins at 20 µg per lane. Secondary Goat Anti-Rabbit IgG, (H+L), Peroxidase conjugated at 1/10000 dilution. Predicted band size : 21 kDa Blocking/Dilution buffer: 5% NFDM/TBST.

Please note: All products are 'FOR RESEARCH USE ONLY. NOT FOR USE IN DIAGNOSTIC OR THERAPEUTIC PROCEDURES'.