

GC Antibody (N-Term)

Purified Rabbit Polyclonal Antibody (Pab)

Catalog # AP22189a

Product Information

Application	WB, E
Primary Accession	P02774
Reactivity	Human
Host	Rabbit
Clonality	polyclonal
Isotype	Rabbit IgG
Clone Names	RB55082
Calculated MW	52918

Additional Information

Gene ID	2638
Other Names	Vitamin D-binding protein, DBP, VDB, Gc-globulin, Group-specific component, GC
Target/Specificity	This GC antibody is generated from a rabbit immunized with a KLH conjugated synthetic peptide between 125-157 amino acids from human GC.
Dilution	WB~~1:2000 E~~Use at an assay dependent concentration.
Format	Purified polyclonal antibody supplied in PBS with 0.09% (W/V) sodium azide. This antibody is purified through a protein A column, followed by peptide affinity purification.
Storage	Maintain refrigerated at 2-8°C for up to 2 weeks. For long term storage store at -20°C in small aliquots to prevent freeze-thaw cycles.
Precautions	GC Antibody (N-Term) is for research use only and not for use in diagnostic or therapeutic procedures.

Protein Information

Name	GC
Function	Involved in vitamin D transport and storage, scavenging of extracellular G-actin, enhancement of the chemotactic activity of C5 alpha for neutrophils in inflammation and macrophage activation.
Cellular Location	Secreted.

Tissue Location

Expressed in the liver. Found in plasma, ascites, cerebrospinal fluid and urine.

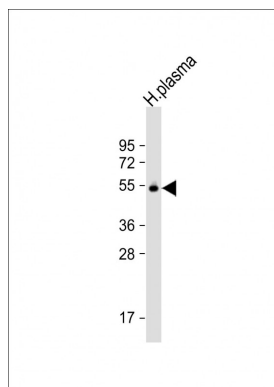
Background

Multifunctional protein found in plasma, ascitic fluid, cerebrospinal fluid, and urine and on the surface of many cell types. In plasma, it carries the vitamin D sterols and prevents polymerization of actin by binding its monomers. DBP associates with membrane-bound immunoglobulin on the surface of B-lymphocytes and with IgG Fc receptor on the membranes of T-lymphocytes.

References

Cooke N.E.,et al.J. Clin. Invest. 76:2420-2424(1985).
Yang F.,et al.Proc. Natl. Acad. Sci. U.S.A. 82:7994-7998(1985).
Braun A.,et al.Biochim. Biophys. Acta 1216:385-394(1993).
Witke W.F.,et al.Genomics 16:751-754(1993).
Ota T.,et al.Nat. Genet. 36:40-45(2004).

Images



Anti-GC Antibody (N-Term) at 1:2000 dilution + human plasma lysate Lysates/proteins at 20 µg per lane. Secondary Goat Anti-Rabbit IgG, (H+L), Peroxidase conjugated at 1/10000 dilution. Predicted band size : 53 kDa Blocking/Dilution buffer: 5% NFDM/TBST.

Please note: All products are 'FOR RESEARCH USE ONLY. NOT FOR USE IN DIAGNOSTIC OR THERAPEUTIC PROCEDURES'.