

PEPD Antibody (C-Term)

Purified Rabbit Polyclonal Antibody (Pab)

Catalog # AP22203b

Product Information

Application	WB, E
Primary Accession	P12955
Other Accession	Q11136 , Q5RFB3 , Q5I0D7
Reactivity	Human, Rat, Mouse
Predicted	Mouse, Rat
Host	Rabbit
Clonality	polyclonal
Isotype	Rabbit IgG
Clone Names	RB55146
Calculated MW	54548

Additional Information

Gene ID	5184
Other Names	Xaa-Pro dipeptidase, X-Pro dipeptidase, 3.4.13.9, Imidodipeptidase, Peptidase D, Proline dipeptidase, Prolidase, PEPD, PRD
Target/Specificity	This PEPD antibody is generated from a rabbit immunized with a KLH conjugated synthetic peptide between 364-398 amino acids from human PEPD.
Dilution	WB~~1:2000 E~~Use at an assay dependent concentration.
Format	Purified polyclonal antibody supplied in PBS with 0.09% (W/V) sodium azide. This antibody is purified through a protein A column, followed by peptide affinity purification.
Storage	Maintain refrigerated at 2-8°C for up to 2 weeks. For long term storage store at -20°C in small aliquots to prevent freeze-thaw cycles.
Precautions	PEPD Antibody (C-Term) is for research use only and not for use in diagnostic or therapeutic procedures.

Protein Information

Name	PEPD {ECO:0000303 PubMed:8198124, ECO:0000312 HGNC:HGNC:8840}
Function	Dipeptidase that catalyzes the hydrolysis of dipeptides with a prolyl (Xaa-Pro) or hydroxyprolyl residue in the C-terminal position (PubMed: 17081196 , PubMed: 35165443). The preferred dipeptide substrate is

Gly-Pro, but other Xaa-Pro dipeptides, such as Ala-Pro, Met-Pro, Phe-Pro, Val-Pro and Leu-Pro, can be cleaved (PubMed:[17081196](#)). Plays an important role in collagen metabolism because the high level of iminoacids in collagen (PubMed:[2925654](#)).

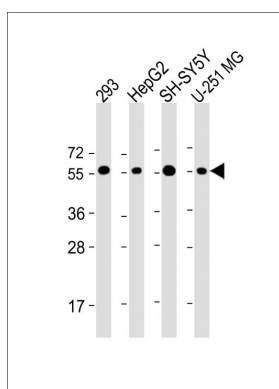
Background

Splits dipeptides with a prolyl or hydroxyprolyl residue in the C-terminal position. Plays an important role in collagen metabolism because the high level of iminoacids in collagen.

References

Endo F.,et al.J. Biol. Chem. 264:4476-4481(1989).
Kalnine N.,et al.Submitted (MAY-2003) to the EMBL/GenBank/DDBJ databases.
Ota T.,et al.Nat. Genet. 36:40-45(2004).
Grimwood J.,et al.Nature 428:529-535(2004).
Harris R.A.,et al.Proteomics 2:212-223(2002).

Images



All lanes : Anti-PEPD Antibody (C-Term) at 1:2000 dilution
Lane 1: 293 whole cell lysate Lane 2: HepG2 whole cell lysate Lane 3: SH-SY5Y whole cell lysate Lane 4: U-251 MG whole cell lysate Lysates/proteins at 20 µg per lane.
Secondary Goat Anti-Rabbit IgG, (H+L), Peroxidase conjugated at 1/10000 dilution. Predicted band size : 55 kDa Blocking/Dilution buffer: 5% NFDM/TBST.

Please note: All products are 'FOR RESEARCH USE ONLY. NOT FOR USE IN DIAGNOSTIC OR THERAPEUTIC PROCEDURES'.