

GSTA5 Antibody (Center)

Purified Rabbit Polyclonal Antibody (Pab)

Catalog # AP22214c

Product Information

Application	WB, E
Primary Accession	Q7RTV2
Reactivity	Human
Host	Rabbit
Clonality	polyclonal
Isotype	Rabbit IgG
Clone Names	RB55232
Calculated MW	25722

Additional Information

Gene ID	221357
Other Names	Glutathione S-transferase A5, 2.5.1.18, GST class-alpha member 5, Glutathione S-transferase A5-5, GSTA5
Target/Specificity	This GSTA5 antibody is generated from a rabbit immunized with a KLH conjugated synthetic peptide between 115-146 amino acids from the Central region of human GSTA5.
Dilution	WB~~1:2000 E~~Use at an assay dependent concentration.
Format	Purified polyclonal antibody supplied in PBS with 0.09% (W/V) sodium azide. This antibody is purified through a protein A column, followed by peptide affinity purification.
Storage	Maintain refrigerated at 2-8°C for up to 2 weeks. For long term storage store at -20°C in small aliquots to prevent freeze-thaw cycles.
Precautions	GSTA5 Antibody (Center) is for research use only and not for use in diagnostic or therapeutic procedures.

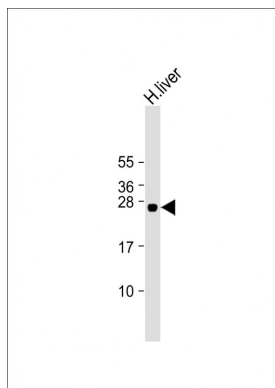
Protein Information

Name	GSTA5
Cellular Location	Cytoplasm.
Tissue Location	Expression not detected.

References

Mungall A.J.,et al.Nature 425:805-811(2003).
Morel F.,et al.Pharmacogenetics 12:277-286(2002).
Singh S.P.,et al.Biochim. Biophys. Acta 1800:16-22(2010).

Images



Anti-GSTA5 Antibody (Center) at 1:2000 dilution + human liver lysate Lysates/proteins at 20 µg per lane. Secondary Goat Anti-Rabbit IgG, (H+L), Peroxidase conjugated at 1/10000 dilution. Predicted band size : 26 kDa
Blocking/Dilution buffer: 5% NFDM/TBST.

Please note: All products are 'FOR RESEARCH USE ONLY. NOT FOR USE IN DIAGNOSTIC OR THERAPEUTIC PROCEDURES'.