

# C1GALT1C1 Antibody (N-Term)

Purified Rabbit Polyclonal Antibody (Pab)

Catalog # AP22217a

## Product Information

---

<b>Application</b>	WB, E
<b>Primary Accession</b>	<a href="#">Q96EU7</a>
<b>Other Accession</b>	<a href="#">Q3SX46</a>
<b>Reactivity</b>	Human, Rat, Mouse
<b>Predicted</b>	Bovine
<b>Host</b>	Rabbit
<b>Clonality</b>	polyclonal
<b>Isotype</b>	Rabbit IgG
<b>Clone Names</b>	RB56914
<b>Calculated MW</b>	36382

## Additional Information

---

<b>Gene ID</b>	29071
<b>Other Names</b>	C1GALT1-specific chaperone 1, C38H2-like protein 1, C38H2-L1, Core 1 beta1, 3-galactosyltransferase 2, C1Gal-T2, C1GalT2, Core 1 beta3-Gal-T2, Core 1 beta3-galactosyltransferase-specific molecular chaperone, C1GALT1C1, COSMC
<b>Target/Specificity</b>	This C1GALT1C1 antibody is generated from a rabbit immunized with a KLH conjugated synthetic peptide between 26-60 amino acids from human C1GALT1C1.
<b>Dilution</b>	WB~~1:2000 E~~Use at an assay dependent concentration.
<b>Format</b>	Purified polyclonal antibody supplied in PBS with 0.09% (W/V) sodium azide. This antibody is purified through a protein A column, followed by peptide affinity purification.
<b>Storage</b>	Maintain refrigerated at 2-8°C for up to 2 weeks. For long term storage store at -20°C in small aliquots to prevent freeze-thaw cycles.
<b>Precautions</b>	C1GALT1C1 Antibody (N-Term) is for research use only and not for use in diagnostic or therapeutic procedures.

## Protein Information

---

<b>Name</b>	C1GALT1C1
<b>Synonyms</b>	COSMC

<b>Function</b>	Probable chaperone required for the generation of 1 O-glycan Gal-beta1-3GalNAc-alpha1-Ser/Thr (T antigen), which is a precursor for many extended O-glycans in glycoproteins. Probably acts as a specific molecular chaperone assisting the folding/stability of core 1 beta-3-galactosyltransferase (C1GALT1).
<b>Cellular Location</b>	Membrane; Single-pass type II membrane protein
<b>Tissue Location</b>	Ubiquitously expressed. Abundantly expressed in salivary gland, stomach, small intestine, kidney, and testis and at intermediate levels in whole brain, cerebellum, spinal cord, thymus, spleen, trachea, lung, pancreas, ovary, and uterus

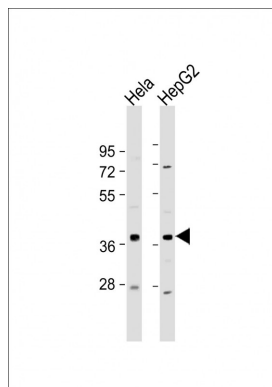
## Background

Probable chaperone required for the generation of 1 O- glycan Gal-beta1-3GalNAc-alpha1-Ser/Thr (T antigen), which is a precursor for many extended O-glycans in glycoproteins. Probably acts as a specific molecular chaperone assisting the folding/stability of core 1 beta-3-galactosyltransferase (C1GALT1).

## References

Kudo T.,et al.J. Biol. Chem. 277:47724-47731(2002).  
Kudo T.,et al.J. Biol. Chem. 281:24999-24999(2006).  
Ju T.,et al.Proc. Natl. Acad. Sci. U.S.A. 99:16613-16618(2002).  
Rubboli F.,et al.Submitted (APR-1999) to the EMBL/GenBank/DDBJ databases.  
Zhang Q.-H.,et al.Genome Res. 10:1546-1560(2000).

## Images



All lanes : Anti-C1GALT1C1 Antibody (N-Term) at 1:2000 dilution  
Lane 1: HeLa whole cell lysate  
Lane 2: HepG2 whole cell lysate  
Lysates/proteins at 20 µg per lane.  
Secondary Goat Anti-Rabbit IgG, (H+L), Peroxidase conjugated at 1/10000 dilution. Predicted band size : 36 kDa  
Blocking/Dilution buffer: 5% NFDM/TBST.

## Citations

- [C1GALT1C1/COSMC is a novel prognostic biomarker for hepatocellular carcinoma.](#)

Please note: All products are 'FOR RESEARCH USE ONLY. NOT FOR USE IN DIAGNOSTIC OR THERAPEUTIC PROCEDURES'.