

PLAA Antibody (Center)

Purified Rabbit Polyclonal Antibody (Pab)

Catalog # AP22224c

Product Information

Application	WB, E
Primary Accession	Q9Y263
Reactivity	Human, Rat, Mouse
Host	Rabbit
Clonality	polyclonal
Isotype	Rabbit IgG
Clone Names	RB56657
Calculated MW	87157

Additional Information

Gene ID	9373
Other Names	Phospholipase A-2-activating protein, PLA2P, PLAP, PLAA, PLAP
Target/Specificity	This PLAA antibody is generated from a rabbit immunized with a KLH conjugated synthetic peptide between 294-328 amino acids from the Central region of human PLAA.
Dilution	WB~~1:2000 E~~Use at an assay dependent concentration.
Format	Purified polyclonal antibody supplied in PBS with 0.09% (W/V) sodium azide. This antibody is purified through a protein A column, followed by peptide affinity purification.
Storage	Maintain refrigerated at 2-8°C for up to 2 weeks. For long term storage store at -20°C in small aliquots to prevent freeze-thaw cycles.
Precautions	PLAA Antibody (Center) is for research use only and not for use in diagnostic or therapeutic procedures.

Protein Information

Name	PLAA
Synonyms	PLAP
Function	Plays a role in protein ubiquitination, sorting and degradation through its association with VCP (PubMed: 27753622). Involved in ubiquitin-mediated membrane proteins trafficking to late endosomes in an ESCRT-dependent manner, and hence plays a role in synaptic vesicle recycling (By similarity).

May play a role in macroautophagy, regulating for instance the clearance of damaged lysosomes (PubMed:[27753622](#)). Plays a role in cerebellar Purkinje cell development (By similarity). Positively regulates cytosolic and calcium-independent phospholipase A2 activities in a tumor necrosis factor alpha (TNF-alpha)- or lipopolysaccharide (LPS)-dependent manner, and hence prostaglandin E2 biosynthesis (PubMed:[18291623](#), PubMed:[28007986](#)).

Cellular Location

Nucleus. Cytoplasm. Synapse {ECO:0000250|UniProtKB:P27612}.
Note=Recruited to damaged lysosomes decorated with K48-linked ubiquitin chains

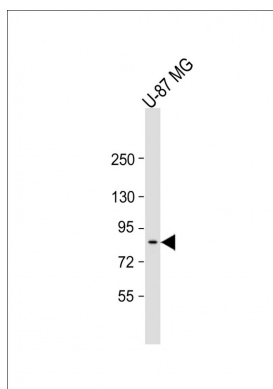
Background

Involved in the maintenance of ubiquitin levels.

References

Ota T.,et al.Nat. Genet. 36:40-45(2004).
Bechtel S.,et al.BMC Genomics 8:399-399(2007).
Humphray S.J.,et al.Nature 429:369-374(2004).
Beatty B.,et al.Genomics 62:529-532(1999).
Totoki Y.,et al.Submitted (APR-2005) to the EMBL/GenBank/DDBJ databases.

Images



Anti-PLAA Antibody (Center) at 1:2000 dilution + U-87 MG whole cell lysate Lysates/proteins at 20 µg per lane. Secondary Goat Anti-Rabbit IgG, (H+L), Peroxidase conjugated at 1/10000 dilution. Predicted band size : 87 kDa Blocking/Dilution buffer: 5% NFDM/TBST.

Please note: All products are 'FOR RESEARCH USE ONLY. NOT FOR USE IN DIAGNOSTIC OR THERAPEUTIC PROCEDURES'.