

# CD24 Antibody (Center)

Purified Rabbit Polyclonal Antibody (Pab)

Catalog # AP22227c

## Product Information

---

<b>Application</b>	WB, E
<b>Primary Accession</b>	<a href="#">P25063</a>
<b>Other Accession</b>	<a href="#">Q6SW14</a>
<b>Reactivity</b>	Human
<b>Host</b>	Rabbit
<b>Clonality</b>	polyclonal
<b>Isotype</b>	Rabbit IgG
<b>Clone Names</b>	RB57059
<b>Calculated MW</b>	8083

## Additional Information

---

<b>Gene ID</b>	100133941
<b>Other Names</b>	Signal transducer CD24, Small cell lung carcinoma cluster 4 antigen, CD24, CD24, CD24A
<b>Target/Specificity</b>	This CD24 antibody is generated from a rabbit immunized with a KLH conjugated synthetic peptide between 17-38 amino acids from the Central region of human CD24.
<b>Dilution</b>	WB~~1:1000-1:2000 E~~Use at an assay dependent concentration.
<b>Format</b>	Purified polyclonal antibody supplied in PBS with 0.09% (W/V) sodium azide. This antibody is purified through a protein A column, followed by peptide affinity purification.
<b>Storage</b>	Maintain refrigerated at 2-8°C for up to 2 weeks. For long term storage store at -20°C in small aliquots to prevent freeze-thaw cycles.
<b>Precautions</b>	CD24 Antibody (Center) is for research use only and not for use in diagnostic or therapeutic procedures.

## Protein Information

---

<b>Name</b>	CD24
<b>Synonyms</b>	CD24A
<b>Function</b>	May have a pivotal role in cell differentiation of different cell types. Signaling could be triggered by the binding of a lectin- like ligand to the CD24

carbohydrates, and transduced by the release of second messengers derived from the GPI-anchor. Modulates B-cell activation responses. Promotes AG-dependent proliferation of B-cells, and prevents their terminal differentiation into antibody-forming cells (PubMed:[11313396](#)). In association with SIGLEC10 may be involved in the selective suppression of the immune response to danger-associated molecular patterns (DAMPs) such as HMGB1, HSP70 and HSP90. Plays a role in the control of autoimmunity (By similarity).

#### Cellular Location

Cell membrane; Lipid-anchor, GPI-anchor.

#### Tissue Location

B-cells. Expressed in a number of B-cell lines including P32/ISH and Namalwa. Expressed in erythroleukemia cell and small cell lung carcinoma cell lines. Also expressed on the surface of T-cells.

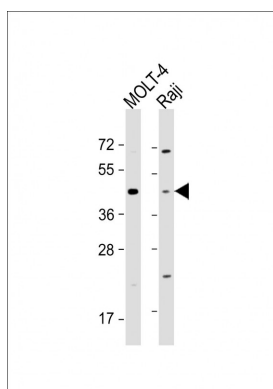
## Background

Modulates B-cell activation responses. Signaling could be triggered by the binding of a lectin-like ligand to the CD24 carbohydrates, and transduced by the release of second messengers derived from the GPI-anchor. Promotes AG-dependent proliferation of B-cells, and prevents their terminal differentiation into antibody-forming cells.

## References

Kay R.,et al.J. Immunol. 147:1412-1416(1991).  
Jackson D.,et al.Cancer Res. 52:5264-5270(1992).  
Kalnine N.,et al.Submitted (MAY-2003) to the EMBL/GenBank/DDBJ databases.  
Hough M.R.,et al.Genomics 22:154-161(1994).  
Zarn J.A.,et al.Biochem. Biophys. Res. Commun. 225:384-391(1996).

## Images



All lanes : Anti-CD24 Antibody (Center) at 1:1000-1:2000 dilution Lane 1: MOLT-4 whole cell lysate Lane 2: Raji whole cell lysate Lysates/proteins at 20 µg per lane. Secondary Goat Anti-Rabbit IgG, (H+L), Peroxidase conjugated at 1/10000 dilution. Predicted band size : 8 kDa Blocking/Dilution buffer: 5% NFDM/TBST.

## Citations

- [LncRNA IL21-AS1 facilitates tumour progression by enhancing CD24-induced phagocytosis inhibition and tumorigenesis in ovarian cancer](#)
- [CBX7 regulates stem cell-like properties of gastric cancer cells via p16 and AKT-NF-κB-miR-21 pathways](#)