

HA.2x Tag Antibody, HRP Conjugate

Purified Rabbit Polyclonal Antibody (Pab)

Catalog # AP22230a

Product Information

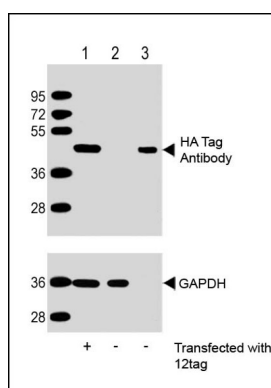
Application	WB, E
Primary Accession	NA
Reactivity	Human
Host	Rabbit
Clonality	polyclonal
Isotype	Rabbit IgG
Clone Names	RB56167

Additional Information

Target/Specificity	This antibody is generated from a rabbit immunized with a KLH conjugated synthetic peptide of HA.2x tag.
Dilution	WB~~1:8000 E~~Use at an assay dependent concentration.
Storage	Maintain refrigerated at 2-8°C for up to 2 weeks. For long term storage store at -20°C in small aliquots to prevent freeze-thaw cycles.
Precautions	HA.2x Tag Antibody, HRP Conjugate is for research use only and not for use in diagnostic or therapeutic procedures.

Protein Information

Images



All lanes : Anti-HA Tag Antibody at 1:2000 dilution (upper) or GAPDH (lower) Lane 1: 293T/17 transfected with 12tag lysate (10ug) Lane 2: Non-transfected 293T/17 lysate (10ug) Lane 3: 12tag recombinant protein lysate (0.1ug) Secondary Goat Anti-Rabbit IgG, (H+L), Peroxidase conjugated at 1/10000 dilution. Predicted band size : 45-50 kDa Blocking/Dilution buffer: 5% NFDm/TBST.

Please note: All products are 'FOR RESEARCH USE ONLY. NOT FOR USE IN DIAGNOSTIC OR THERAPEUTIC PROCEDURES'.