

# IL23A Antibody (Center)

Purified Rabbit Polyclonal Antibody (Pab)

Catalog # AP22239c

## Product Information

---

<b>Application</b>	WB, FC, E
<b>Primary Accession</b>	<a href="#">Q9NPF7</a>
<b>Reactivity</b>	Human, Rat, Mouse
<b>Host</b>	Rabbit
<b>Clonality</b>	polyclonal
<b>Isotype</b>	Rabbit IgG
<b>Clone Names</b>	RB56752
<b>Calculated MW</b>	20730

## Additional Information

---

<b>Gene ID</b>	51561
<b>Other Names</b>	Interleukin-23 subunit alpha, IL-23 subunit alpha, IL-23-A, Interleukin-23 subunit p19, IL-23p19, IL23A, SGRF
<b>Target/Specificity</b>	This IL23A antibody is generated from a rabbit immunized with a KLH conjugated synthetic peptide between 33-67 amino acids from the Central region of human IL23A.
<b>Dilution</b>	WB~~1:2000 FC~~1:25 E~~Use at an assay dependent concentration.
<b>Format</b>	Purified polyclonal antibody supplied in PBS with 0.09% (W/V) sodium azide. This antibody is purified through a protein A column, followed by peptide affinity purification.
<b>Storage</b>	Maintain refrigerated at 2-8°C for up to 2 weeks. For long term storage store at -20°C in small aliquots to prevent freeze-thaw cycles.
<b>Precautions</b>	IL23A Antibody (Center) is for research use only and not for use in diagnostic or therapeutic procedures.

## Protein Information

---

<b>Name</b>	IL23A
<b>Synonyms</b>	SGRF
<b>Function</b>	Associates with IL12B to form the pro-inflammatory cytokine IL-23 that plays different roles in innate and adaptive immunity (PubMed: <a href="#">11114383</a> ). Released by antigen-presenting cells such as dendritic cells or macrophages,

binds to a heterodimeric receptor complex composed of IL12RB1 and IL23R to activate JAK2 and TYK2 which then phosphorylate the receptor to form a docking site leading to the phosphorylation of STAT3 and STAT4 (PubMed:[29287995](#), PubMed:[32474165](#), PubMed:[33606986](#)). This process leads to activation of several pathways including p38 MAPK or NF-kappa-B and promotes the production of pro- inflammatory cytokines such as interleukin-17A/IL17A (PubMed:[12023369](#)). In turn, participates in the early and effective intracellular bacterial clearance (PubMed:[32474165](#)). Promotes the expansion and survival of T-helper 17 cells, a CD4-positive helper T-cell subset that produces IL-17, as well as other IL-17-producing cells (PubMed:[17676044](#)).

#### Cellular Location

Secreted. Note=Secreted upon association with IL12B

#### Tissue Location

Secreted by activated dendritic and phagocytic cells and keratinocytes. Also expressed by dermal Langerhans cells (at protein level).

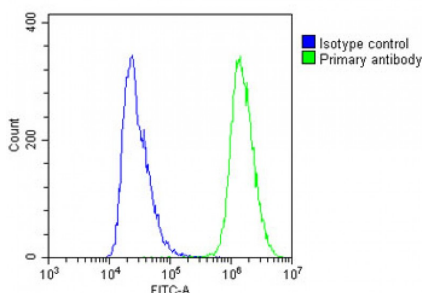
## Background

Associates with IL12B to form the IL-23 interleukin, a heterodimeric cytokine which functions in innate and adaptive immunity. IL-23 may constitute with IL-17 an acute response to infection in peripheral tissues. IL-23 binds to a heterodimeric receptor complex composed of IL12RB1 and IL23R, activates the Jak- Stat signaling cascade, stimulates memory rather than naive T- cells and promotes production of proinflammatory cytokines. IL-23 induces autoimmune inflammation and thus may be responsible for autoimmune inflammatory diseases and may be important for tumorigenesis.

## References

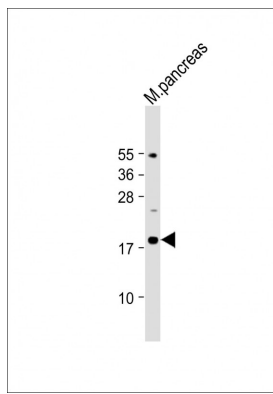
Oppmann B.,et al.Immunity 13:715-725(2000).  
 Hirata Y.,et al.Submitted (JUL-1999) to the EMBL/GenBank/DDBJ databases.  
 Clark H.F.,et al.Genome Res. 13:2265-2270(2003).  
 Parham C.,et al.J. Immunol. 168:5699-5708(2002).  
 Pirhonen J.,et al.J. Immunol. 169:5673-5678(2002).

## Images



Overlay histogram showing A431 cells stained with AP22239c(green line). The cells were fixed with 2% paraformaldehyde and then permeabilized with 90% methanol for 10 min. The cells were then incubated in 2% bovine serum albumin to block non-specific protein-protein interactions followed by the antibody (1:25 dilution) for 60 min at 37°C. The secondary antibody used was Goat-Anti-Rabbit IgG, DyLight® 488 Conjugated Highly Cross-Adsorbed at 1/200 dilution for 40 min at Room temperature. Isotype control antibody (blue line) was rabbit IgG1 (1µg/1x10<sup>6</sup> cells) used under the same conditions. Acquisition of >10, 000 events was performed.

Anti-IL23A Antibody (Center) at 1:2000 dilution + Mouse pancreas lysate Lysates/proteins at 20 µg per lane. Secondary Goat Anti-Rabbit IgG, (H+L), Peroxidase conjugated at 1/10000 dilution. Predicted band size : 21 kDa Blocking/Dilution buffer: 5% NFDM/TBST.



Please note: All products are 'FOR RESEARCH USE ONLY. NOT FOR USE IN DIAGNOSTIC OR THERAPEUTIC PROCEDURES'.