

MPL Antibody (N-Term)

Purified Rabbit Polyclonal Antibody (Pab)

Catalog # AP22241a

Product Information

Application	WB, E
Primary Accession	P40238
Reactivity	Human, Mouse
Host	Rabbit
Clonality	polyclonal
Isotype	Rabbit IgG
Clone Names	RB56766
Calculated MW	71245

Additional Information

Gene ID	4352
Other Names	Thrombopoietin receptor, TPO-R, Myeloproliferative leukemia protein, Proto-oncogene c-Mpl, CD110, MPL, TPOR
Target/Specificity	This MPL antibody is generated from a rabbit immunized with a KLH conjugated synthetic peptide between 133-166 amino acids from human MPL.
Dilution	WB~~1:2000 E~~Use at an assay dependent concentration.
Format	Purified polyclonal antibody supplied in PBS with 0.09% (W/V) sodium azide. This antibody is purified through a protein A column, followed by peptide affinity purification.
Storage	Maintain refrigerated at 2-8°C for up to 2 weeks. For long term storage store at -20°C in small aliquots to prevent freeze-thaw cycles.
Precautions	MPL Antibody (N-Term) is for research use only and not for use in diagnostic or therapeutic procedures.

Protein Information

Name	MPL
Synonyms	TPOR
Function	Receptor for thrombopoietin that regulates hematopoietic stem cell renewal, megakaryocyte differentiation, and platelet formation. Upon activation by THPO, induces rapid tyrosine phosphorylation and activation of JAK2, providing docking sites for many signaling proteins such as STAT5,

SHIP/INPP5D, GRB2, SOS1 and PI3K (PubMed:[15899890](#), PubMed:[37633268](#)). In turn, These signaling cascades lead to the proliferation, survival, and differentiation of megakaryocytes, ultimately leading to increased platelet production.

Cellular Location	Cell membrane; Single-pass type I membrane protein. Golgi apparatus Cell surface
Tissue Location	Expressed at a low level in a large number of cells of hematopoietic origin. Isoform 1 and isoform 2 are always found to be coexpressed

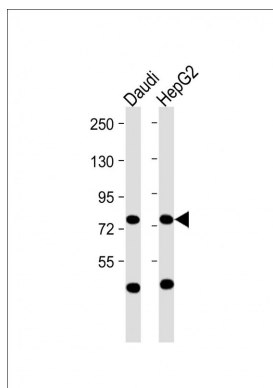
Background

Receptor for thrombopoietin. May represent a regulatory molecule specific for TPO-R-dependent immune responses.

References

Vigon I.,et al.Proc. Natl. Acad. Sci. U.S.A. 89:5640-5644(1992).
Mignotte V.,et al.Genomics 20:5-12(1994).
Gregory S.G.,et al.Nature 441:315-321(2006).
Mural R.J.,et al.Submitted (SEP-2005) to the EMBL/GenBank/DBJ databases.
Saur S.J.,et al.Blood 115:1254-1263(2010).

Images



All lanes : Anti-MPL Antibody (N-Term) at 1:2000 dilution
Lane 1: Daudi whole cell lysate Lane 2: HepG2 whole cell lysate
Lysates/proteins at 20 µg per lane. Secondary Goat Anti-Rabbit IgG, (H+L), Peroxidase conjugated at 1/10000 dilution. Predicted band size : 71 kDa
Blocking/Dilution buffer: 5% NFDM/TBST.

Please note: All products are 'FOR RESEARCH USE ONLY. NOT FOR USE IN DIAGNOSTIC OR THERAPEUTIC PROCEDURES'.