

GGT3P Antibody (Center)

Purified Rabbit Polyclonal Antibody (Pab)

Catalog # AP22260c

Product Information

Application	WB, E
Primary Accession	A6NGU5
Reactivity	Human
Host	Rabbit
Clonality	polyclonal
Isotype	Rabbit IgG
Clone Names	RB55245
Calculated MW	61502

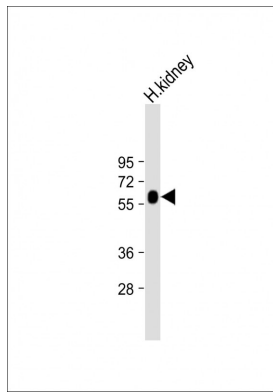
Additional Information

Target/Specificity	This GGT3P antibody is generated from a rabbit immunized with a KLH conjugated synthetic peptide between 176-207 amino acids from the Central region of human GGT3P.
Dilution	WB~~1:2000 E~~Use at an assay dependent concentration.
Format	Purified polyclonal antibody supplied in PBS with 0.09% (W/V) sodium azide. This antibody is purified through a protein A column, followed by peptide affinity purification.
Storage	Maintain refrigerated at 2-8°C for up to 2 weeks. For long term storage store at -20°C in small aliquots to prevent freeze-thaw cycles.
Precautions	GGT3P Antibody (Center) is for research use only and not for use in diagnostic or therapeutic procedures.

Protein Information

Name	GGT3P (HGNC:4252)
Synonyms	GGT3
Function	Hydrolyzes and transfers gamma-glutamyl moieties from glutathione and other gamma-glutamyl compounds to acceptors.
Cellular Location	Membrane {ECO:0000250 UniProtKB:P19440}; Single-pass type II membrane protein {ECO:0000250 UniProtKB:P07314}

Images



Anti-GGT3P Antibody (Center) at 1:2000 dilution + Human kidney lysate Lysates/proteins at 20 μ g per lane. Secondary Goat Anti-Rabbit IgG, (H+L), Peroxidase conjugated at 1/10000 dilution. Predicted band size : 62 kDa Blocking/Dilution buffer: 5% NFDM/TBST.

Please note: All products are 'FOR RESEARCH USE ONLY. NOT FOR USE IN DIAGNOSTIC OR THERAPEUTIC PROCEDURES'.