

# BMP15 Antibody

Purified Rabbit Polyclonal Antibody (Pab)

Catalog # AP22269a

## Product Information

---

<b>Application</b>	IF, WB, E
<b>Primary Accession</b>	<a href="#">O95972</a>
<b>Reactivity</b>	Human
<b>Host</b>	Rabbit
<b>Clonality</b>	polyclonal
<b>Isotype</b>	Rabbit IgG
<b>Clone Names</b>	RB56391
<b>Calculated MW</b>	45055

## Additional Information

---

<b>Gene ID</b>	9210
<b>Other Names</b>	Bone morphogenetic protein 15, BMP-15, Growth/differentiation factor 9B, GDF-9B, BMP15, GDF9B
<b>Target/Specificity</b>	This BMP15 antibody is generated from a rabbit immunized with a recombinant protein of human BMP15.
<b>Dilution</b>	IF~~1:25 WB~~1:4000 E~~Use at an assay dependent concentration.
<b>Format</b>	Purified polyclonal antibody supplied in PBS with 0.09% (W/V) sodium azide. This antibody is purified through a protein A column, followed by peptide affinity purification.
<b>Storage</b>	Maintain refrigerated at 2-8°C for up to 2 weeks. For long term storage store at -20°C in small aliquots to prevent freeze-thaw cycles.
<b>Precautions</b>	BMP15 Antibody is for research use only and not for use in diagnostic or therapeutic procedures.

## Protein Information

---

<b>Name</b>	BMP15
<b>Synonyms</b>	GDF9B
<b>Function</b>	May be involved in follicular development. Oocyte-specific growth/differentiation factor that stimulates folliculogenesis and granulosa cell (GC) growth.

## Background

---

May be involved in follicular development. Oocyte- specific growth/differentiation factor that stimulates folliculogenesis and granulosa cell (GC) growth.

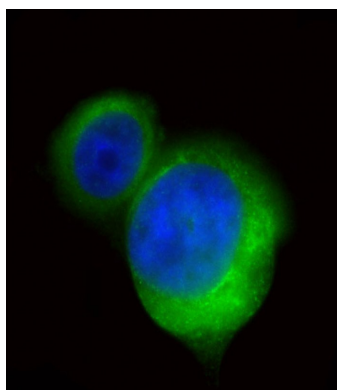
## References

---

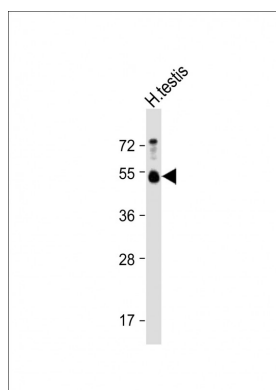
Dube J.L.,et al.Mol. Endocrinol. 12:1809-1817(1998).  
Aaltonen J.,et al.J. Clin. Endocrinol. Metab. 84:2744-2750(1999).  
Ross M.T.,et al.Nature 434:325-337(2005).  
Saito S.,et al.Protein Sci. 17:362-370(2008).  
Crawford J.L.,et al.Mol. Cell. Endocrinol. 348:339-343(2012).

## Images

---



Immunofluorescent analysis of 4% paraformaldehyde-fixed, 0.1% Triton X-100 permeabilized PC-3 cells labeling BMP15 with AP22269a at 1/25 dilution, followed by Dylight® 488-conjugated goat anti-Rabbit IgG secondary antibody at 1/200 dilution (green). Immunofluorescence image showing Cytoplasm and Weak Nucleus staining on PC-3 cell line. The nuclear counter stain is DAPI (blue).



Anti-BMP15 Antibody at 1:4000 dilution + Human testis lysate Lysates/proteins at 20 µg per lane. Secondary Goat Anti-Rabbit IgG, (H+L), Peroxidase conjugated at 1/10000 dilution. Predicted band size : 45 kDa Blocking/Dilution buffer: 5% NFDM/TBST.

Please note: All products are 'FOR RESEARCH USE ONLY. NOT FOR USE IN DIAGNOSTIC OR THERAPEUTIC PROCEDURES'.