

BMP1 Antibody

Purified Rabbit Polyclonal Antibody (Pab)

Catalog # AP22289a

Product Information

Application	WB, IF, E
Primary Accession	P13497
Reactivity	Human, Mouse
Host	Rabbit
Clonality	polyclonal
Isotype	Rabbit IgG
Clone Names	RB56808
Calculated MW	111249

Additional Information

Gene ID	649
Other Names	Bone morphogenetic protein 1, BMP-1, 3.4.24.19, Mammalian tolloid protein, mTld, Procollagen C-proteinase, PCP, BMP1, PCOLC
Target/Specificity	This BMP1 antibody is generated from a rabbit immunized with a recombinant protein of human BMP1.
Dilution	WB~~1:2000 IF~~1:25 E~~Use at an assay dependent concentration.
Format	Purified polyclonal antibody supplied in PBS with 0.09% (W/V) sodium azide. This antibody is purified through a protein A column, followed by peptide affinity purification.
Storage	Maintain refrigerated at 2-8°C for up to 2 weeks. For long term storage store at -20°C in small aliquots to prevent freeze-thaw cycles.
Precautions	BMP1 Antibody is for research use only and not for use in diagnostic or therapeutic procedures.

Protein Information

Name	BMP1
Synonyms	PCOLC
Function	Metalloprotease that plays key roles in regulating the formation of the extracellular matrix (ECM) via processing of various precursor proteins into mature functional enzymes or structural proteins (PubMed: 33206546). Thereby participates in several developmental and physiological processes

such as cartilage and bone formation, muscle growth and homeostasis, wound healing and tissue repair (PubMed:[32636307](#), PubMed:[33169406](#)). Roles in ECM formation include cleavage of the C-terminal propeptides from procollagens such as procollagen I, II and III or the proteolytic activation of the enzyme lysyl oxidase LOX, necessary to formation of covalent cross- links in collagen and elastic fibers (PubMed:[31152061](#), PubMed:[33206546](#)). Additional substrates include matricellular thrombospondin-1/THBS1 whose cleavage leads to cell adhesion disruption and TGF-beta activation (PubMed:[32636307](#)).

Cellular Location

Golgi apparatus, trans-Golgi network. Secreted, extracellular space, extracellular matrix. Secreted. Note=Co-localizes with POSTN in the Golgi.

Tissue Location

Ubiquitous.

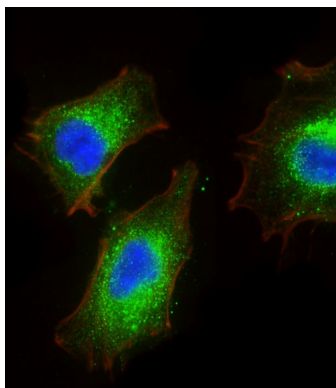
Background

Cleaves the C-terminal propeptides of procollagen I, II and III. Induces cartilage and bone formation. May participate in dorsoventral patterning during early development by cleaving chordin (CHRD). Responsible for the proteolytic activation of lysyl oxidase LOX.

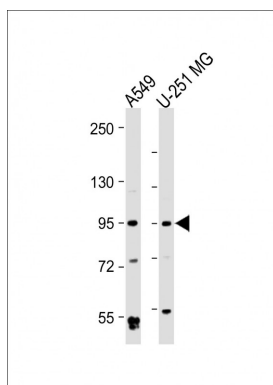
References

Li S.W.,et al.Proc. Natl. Acad. Sci. U.S.A. 93:5127-5130(1996).
Wozney J.M.,et al.Science 242:1528-1534(1988).
Janitz M.,et al.J. Mol. Med. 76:141-146(1998).
Takahara K.,et al.J. Biol. Chem. 269:32572-32578(1994).
Mural R.J.,et al.Submitted (SEP-2005) to the EMBL/GenBank/DDBJ databases.

Images



Immunofluorescent analysis of 4% paraformaldehyde-fixed, 0.1% Triton X-100 permeabilized A549 cells labeling BMP1 with AP22289a at 1/25 dilution, followed by Dylight® 488-conjugated goat anti-Rabbit IgG (OH191631) secondary antibody at 1/200 dilution (green). Immunofluorescence image showing cytoplasm staining on A549 cell line. Cytoplasmic actin is detected with Dylight® 554 Phalloidin (1186255) at 1/500 dilution (red). The nuclear counter stain is DAPI (blue).



All lanes : Anti-BMP1 Antibody at 1:2000 dilution Lane 1: A549 whole cell lysate Lane 2: U-251 MG whole cell lysate Lysates/proteins at 20 µg per lane. Secondary Goat Anti-Rabbit IgG, (H+L), Peroxidase conjugated at 1/10000 dilution. Predicted band size : 111 kDa Blocking/Dilution buffer: 5% NFDM/TBST.

Please note: All products are 'FOR RESEARCH USE ONLY. NOT FOR USE IN DIAGNOSTIC OR THERAPEUTIC PROCEDURES'.