

RGMB Antibody

Purified Rabbit Polyclonal Antibody (Pab)

Catalog # AP22293a

Product Information

Application	WB, IHC-P-Leica, E
Primary Accession	Q6NW40
Reactivity	Human, Mouse
Host	Rabbit
Clonality	polyclonal
Isotype	Rabbit IgG
Clone Names	RB56812
Calculated MW	47547

Additional Information

Gene ID	285704
Other Names	RGM domain family member B, DRG11-responsive axonal guidance and outgrowth of neurite, DRAGON, RGMB
Target/Specificity	This RGMB antibody is generated from a rabbit immunized with a recombinant protein of human RGMB.
Dilution	WB~~1:2000 IHC-P-Leica~~1:500 E~~Use at an assay dependent concentration.
Format	Purified polyclonal antibody supplied in PBS with 0.09% (W/V) sodium azide. This antibody is purified through a protein A column, followed by peptide affinity purification.
Storage	Maintain refrigerated at 2-8°C for up to 2 weeks. For long term storage store at -20°C in small aliquots to prevent freeze-thaw cycles.
Precautions	RGMB Antibody is for research use only and not for use in diagnostic or therapeutic procedures.

Protein Information

Name	RGMB {ECO:0000303 PubMed:19324014, ECO:0000312 HGNC:HGNC:26896}
Function	Member of the repulsive guidance molecule (RGM) family that contributes to the patterning of the developing nervous system (By similarity). Acts as a bone morphogenetic protein (BMP) coreceptor that potentiates BMP signaling (By similarity). Promotes neuronal adhesion (By similarity). May inhibit neurite outgrowth.

Cellular Location

Cell membrane {ECO:0000250|UniProtKB:Q7TQ33}; Lipid-anchor, GPI-anchor {ECO:0000250|UniProtKB:Q7TQ33}. Membrane raft {ECO:0000250|UniProtKB:Q7TQ33}

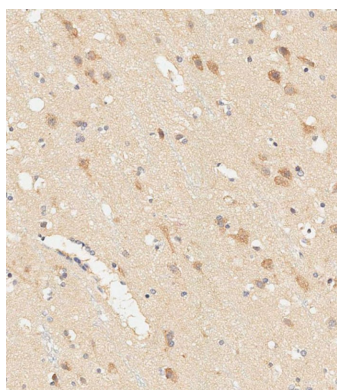
Background

Member of the repulsive guidance molecule (RGM) family that contributes to the patterning of the developing nervous system (By similarity). Acts as a bone morphogenetic protein (BMP) coreceptor that potentiates BMP signaling (By similarity). Promotes neuronal adhesion (By similarity). May inhibit neurite outgrowth.

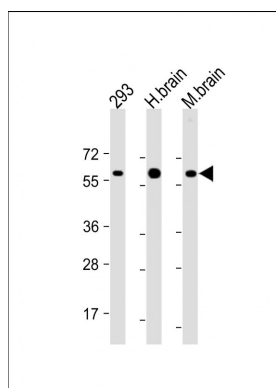
References

Ota T.,et al.Nat. Genet. 36:40-45(2004).
Schmutz J.,et al.Nature 431:268-274(2004).
Liu X.,et al.Biochem. Biophys. Res. Commun. 382:795-800(2009).
Bell C.H.,et al.Science 341:77-80(2013).

Images



Immunohistochemical analysis of paraffin-embedded human brain tissue using AP22293a performed on the Leica® BOND RXm. Samples were incubated with primary antibody(1/500) for 1 hours at room temperature. A undiluted biotinylated CRF Anti-Polyvalent HRP Polymer antibody was used as the secondary antibody.



All lanes : Anti-RGMB Antibody at 1:2000 dilution Lane 1: 293 whole cell lysate Lane 2: Human brain lysate Lane 3: Mouse brain lysate Lysates/proteins at 20 µg per lane. Secondary Goat Anti-Rabbit IgG, (H+L), Peroxidase conjugated at 1/10000 dilution. Predicted band size : 48 kDa Blocking/Dilution buffer: 5% NFDM/TBST.

Please note: All products are 'FOR RESEARCH USE ONLY. NOT FOR USE IN DIAGNOSTIC OR THERAPEUTIC PROCEDURES'.