

TGFA Antibody (C-Term)

Purified Rabbit Polyclonal Antibody (Pab)

Catalog # AP22303b

Product Information

Application	WB, FC, E
Primary Accession	P01135
Other Accession	P48030 , Q06922 , P01134
Reactivity	Human, Rat, Mouse
Predicted	Mouse, Pig, Rat
Host	Rabbit
Clonality	polyclonal
Isotype	Rabbit IgG
Clone Names	RB56968
Calculated MW	17006

Additional Information

Gene ID	7039
Other Names	Protransforming growth factor alpha, Transforming growth factor alpha, TGF-alpha, EGF-like TGF, ETGF, TGF type 1, TGFA
Target/Specificity	This TGFA antibody is generated from a rabbit immunized with a KLH conjugated synthetic peptide between 118-150 amino acids from the human region of human TGFA.
Dilution	WB~~1:2000 FC~~1:25 E~~Use at an assay dependent concentration.
Format	Purified polyclonal antibody supplied in PBS with 0.09% (W/V) sodium azide. This antibody is purified through a protein A column, followed by peptide affinity purification.
Storage	Maintain refrigerated at 2-8°C for up to 2 weeks. For long term storage store at -20°C in small aliquots to prevent freeze-thaw cycles.
Precautions	TGFA Antibody (C-Term) is for research use only and not for use in diagnostic or therapeutic procedures.

Protein Information

Name	TGFA
Function	TGF alpha is a mitogenic polypeptide that is able to bind to the EGF receptor/EGFR and to act synergistically with TGF beta to promote anchorage-independent cell proliferation in soft agar.

Cellular Location

[Transforming growth factor alpha]: Secreted, extracellular space

Tissue Location

Isoform 1, isoform 3 and isoform 4 are expressed in keratinocytes and tumor-derived cell lines

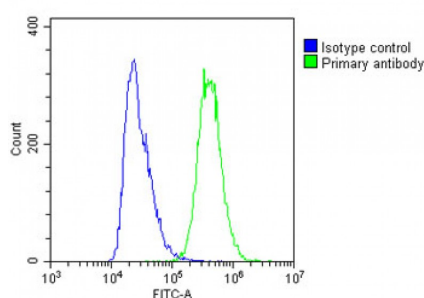
Background

TGF alpha is a mitogenic polypeptide that is able to bind to the EGF receptor/EGFR and to act synergistically with TGF beta to promote anchorage-independent cell proliferation in soft agar.

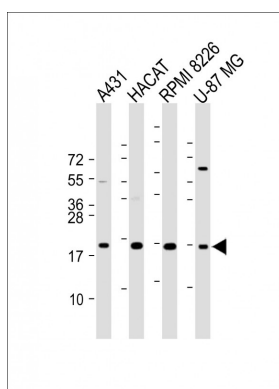
References

Derynck R.,et al.Cell 38:287-297(1984).
Jakowlew S.B.,et al.Mol. Endocrinol. 2:1056-1063(1988).
Qian J.F.,et al.Gene 132:291-296(1993).
Qian J.F.,et al.Am. J. Hum. Genet. 53:168-175(1993).
Machida J.,et al.Genomics 61:237-242(1999).

Images



Overlay histogram showing A431 cells stained with AP22303b(green line). The cells were fixed with 2% paraformaldehyde and then permeabilized with 90% methanol for 10 min. The cells were then incubated in 2% bovine serum albumin to block non-specific protein-protein interactions followed by the antibody (1:25 dilution) for 60 min at 37°C. The secondary antibody used was Goat-Anti-Rabbit IgG, DyLight® 488 Conjugated Highly Cross-Adsorbed at 1/200 dilution for 40 min at Room temperature. Isotype control antibody (blue line) was rabbit IgG1 (1µg/1x10⁶ cells) used under the same conditions. Acquisition of >10, 000 events was performed.



All lanes : Anti-TGFA Antibody (C-Term) at 1:2000 dilution
Lane 1: A431 whole cell lysate Lane 2: HACAT whole cell lysate Lane 3: RPMI 8226 whole cell lysate Lane 4: U-87 MG whole cell lysate Lysates/proteins at 20 µg per lane. Secondary Goat Anti-Rabbit IgG, (H+L), Peroxidase conjugated at 1/10000 dilution. Predicted band size : 17 kDa Blocking/Dilution buffer: 5% NFDM/TBST.

Please note: All products are 'FOR RESEARCH USE ONLY. NOT FOR USE IN DIAGNOSTIC OR THERAPEUTIC PROCEDURES'.