

# IGFBP1 Antibody (Center)

Purified Rabbit Polyclonal Antibody (Pab)

Catalog # AP22309c

## Product Information

---

<b>Application</b>	WB, E
<b>Primary Accession</b>	<a href="#">P08833</a>
<b>Reactivity</b>	Human
<b>Host</b>	Rabbit
<b>Clonality</b>	polyclonal
<b>Isotype</b>	Rabbit IgG
<b>Clone Names</b>	RB57510
<b>Calculated MW</b>	27904

## Additional Information

---

<b>Gene ID</b>	3484
<b>Other Names</b>	Insulin-like growth factor-binding protein 1, IBP-1, IGF-binding protein 1, IGFBP-1, Placental protein 12, PP12, IGFBP1, IBP1
<b>Target/Specificity</b>	This IGFBP1 antibody is generated from a rabbit immunized with a KLH conjugated synthetic peptide between 140-174 amino acids from the Central region of human IGFBP1.
<b>Dilution</b>	WB~~1:2000 E~~Use at an assay dependent concentration.
<b>Format</b>	Purified polyclonal antibody supplied in PBS with 0.09% (W/V) sodium azide. This antibody is purified through a protein A column, followed by peptide affinity purification.
<b>Storage</b>	Maintain refrigerated at 2-8°C for up to 2 weeks. For long term storage store at -20°C in small aliquots to prevent freeze-thaw cycles.
<b>Precautions</b>	IGFBP1 Antibody (Center) is for research use only and not for use in diagnostic or therapeutic procedures.

## Protein Information

---

<b>Name</b>	IGFBP1
<b>Synonyms</b>	IBP1
<b>Function</b>	Multifunctional protein that plays a critical role in regulating the availability of IGFs such as IGF1 and IGF2 to their receptors and thereby regulates IGF-mediated cellular processes including cell migration, proliferation,

differentiation or apoptosis in a cell-type specific manner (PubMed:[11397844](#), PubMed:[15972819](#)). Also plays a positive role in cell migration by interacting with integrin ITGA5:ITGB1 through its RGD motif (PubMed:[7504269](#)). Mechanistically, binding to integrins leads to activation of focal adhesion kinase/PTK2 and stimulation of the mitogen-activated protein kinase (MAPK) pathway (PubMed:[11397844](#)). Regulates cardiomyocyte apoptosis by suppressing HIF-1alpha/HIF1A ubiquitination and subsequent degradation (By similarity).

**Cellular Location** Secreted.

## Background

---

IGF-binding proteins prolong the half-life of the IGFs and have been shown to either inhibit or stimulate the growth promoting effects of the IGFs on cell culture. They alter the interaction of IGFs with their cell surface receptors. Promotes cell migration.

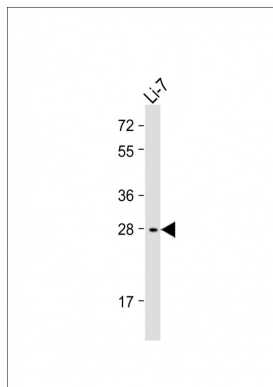
## References

---

Brinkman A.,et al.EMBO J. 7:2417-2423(1988).  
Brewer M.T.,et al.Biochem. Biophys. Res. Commun. 152:1289-1297(1988).  
Grundmann U.,et al.Nucleic Acids Res. 16:8711-8711(1988).  
Julkunen M.,et al.FEBS Lett. 236:295-302(1988).  
Lee Y.-L.,et al.Mol. Endocrinol. 2:404-411(1988).

## Images

---



Anti-IGFBP1 Antibody (Center) at 1:2000 dilution + Li-7 whole cell lysate Lysates/proteins at 20 µg per lane. Secondary Goat Anti-Rabbit IgG, (H+L), Peroxidase conjugated at 1/10000 dilution. Predicted band size : 28 kDa Blocking/Dilution buffer: 5% NFDM/TBST.

Please note: All products are 'FOR RESEARCH USE ONLY. NOT FOR USE IN DIAGNOSTIC OR THERAPEUTIC PROCEDURES'.