

CKS2 Antibody (N-Term)

Purified Rabbit Polyclonal Antibody (Pab)

Catalog # AP22318a

Product Information

Application	WB, FC, E
Primary Accession	P33552
Other Accession	Q2KJI1 , P56390
Reactivity	Human, Mouse
Predicted	Bovine, Mouse
Host	Rabbit
Clonality	polyclonal
Isotype	Rabbit IgG
Clone Names	RB30893
Calculated MW	9860

Additional Information

Gene ID	1164
Other Names	Cyclin-dependent kinases regulatory subunit 2, CKS-2, CKS2
Target/Specificity	This CKS2 antibody is generated from a rabbit immunized with a KLH conjugated synthetic peptide between 6-40 amino acids from the human region of human CKS2.
Dilution	WB~~1:2000 FC~~1:25 E~~Use at an assay dependent concentration.
Format	Purified polyclonal antibody supplied in PBS with 0.09% (W/V) sodium azide. This antibody is purified through a protein A column, followed by peptide affinity purification.
Storage	Maintain refrigerated at 2-8°C for up to 2 weeks. For long term storage store at -20°C in small aliquots to prevent freeze-thaw cycles.
Precautions	CKS2 Antibody (N-Term) is for research use only and not for use in diagnostic or therapeutic procedures.

Protein Information

Name	CKS2
Function	Binds to the catalytic subunit of the cyclin dependent kinases and is essential for their biological function.

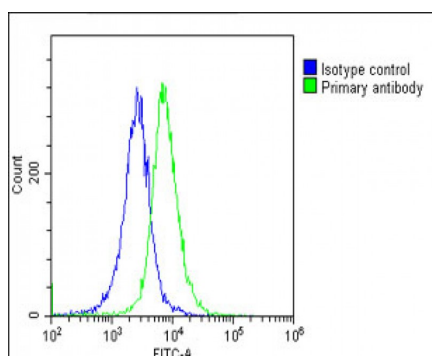
Background

Binds to the catalytic subunit of the cyclin dependent kinases and is essential for their biological function.

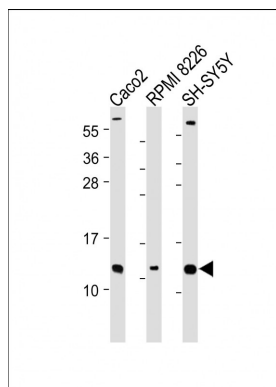
References

Richardson H.E., et al. *Genes Dev.* 4:1332-1344(1990).
Kalnine N., et al. Submitted (MAY-2003) to the EMBL/GenBank/DDBJ databases.
Ebert L., et al. Submitted (JUN-2004) to the EMBL/GenBank/DDBJ databases.
Humphray S.J., et al. *Nature* 429:369-374(2004).
Mural R.J., et al. Submitted (JUL-2005) to the EMBL/GenBank/DDBJ databases.

Images



Overlay histogram showing HeLa cells stained with AP22318a (green line). The cells were fixed with 2% paraformaldehyde (10 min) and then permeabilized with 90% methanol for 10 min. The cells were then incubated in 2% bovine serum albumin to block non-specific protein-protein interactions followed by the antibody (AP22318a, 1:25 dilution) for 60 min at 37°C. The secondary antibody used was Goat-Anti-Rabbit IgG, DyLight® 488 Conjugated Highly Cross-Adsorbed (OE188374) at 1/200 dilution for 40 min at 37°C. Isotype control antibody (blue line) was rabbit IgG1 (1 µg/1x10⁶ cells) used under the same conditions. Acquisition of >10,000 events was performed.



All lanes : Anti-CKS2 Antibody (N-Term) at 1:2000 dilution
Lane 1: Caco2 whole cell lysate Lane 2: RPMI 8226 whole cell lysate Lane 3: SH-SY5Y whole cell lysate
Lysates/proteins at 20 µg per lane. Secondary Goat Anti-Rabbit IgG, (H+L), Peroxidase conjugated at 1/10000 dilution. Predicted band size : 10 kDa Blocking/Dilution buffer: 5% NFDM/TBST.

Please note: All products are 'FOR RESEARCH USE ONLY. NOT FOR USE IN DIAGNOSTIC OR THERAPEUTIC PROCEDURES'.