

MYL1 Antibody (N-Term)

Purified Rabbit Polyclonal Antibody (Pab)

Catalog # AP22324a

Product Information

Application	WB, IHC-P, E
Primary Accession	P05976
Other Accession	P02602
Reactivity	Human, Rat, Mouse
Host	Rabbit
Clonality	polyclonal
Isotype	Rabbit IgG
Clone Names	RB57781
Calculated MW	21145

Additional Information

Gene ID	4632
Other Names	Myosin light chain 1/3, skeletal muscle isoform, MLC1/MLC3, MLC1F/MLC3F, Myosin light chain alkali 1/2, Myosin light chain A1/A2, MYL1
Target/Specificity	This MYL1 antibody is generated from a rabbit immunized with a KLH conjugated synthetic peptide between 24-58 amino acids from the human region of human MYL1.
Dilution	WB~~1:2000 IHC-P~~1:100~500 E~~Use at an assay dependent concentration.
Format	Purified polyclonal antibody supplied in PBS with 0.09% (W/V) sodium azide. This antibody is purified through a protein A column, followed by peptide affinity purification.
Storage	Maintain refrigerated at 2-8°C for up to 2 weeks. For long term storage store at -20°C in small aliquots to prevent freeze-thaw cycles.
Precautions	MYL1 Antibody (N-Term) is for research use only and not for use in diagnostic or therapeutic procedures.

Protein Information

Name	MYL1
Function	Non-regulatory myosin light chain required for proper formation and/or maintenance of myofibers, and thus appropriate muscle function.

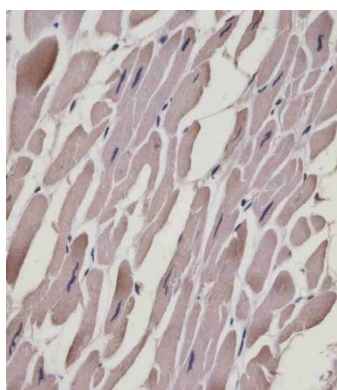
Background

Regulatory light chain of myosin. Does not bind calcium.

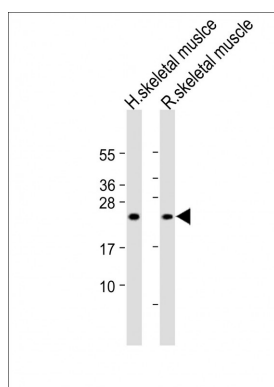
References

Seidel U.,et al.Nucleic Acids Res. 15:4989-4989(1987).
Seidel U.,et al.Gene 66:135-146(1988).
Ebert L.,et al.Submitted (JUN-2004) to the EMBL/GenBank/DDBJ databases.
Ota T.,et al.Nat. Genet. 36:40-45(2004).
Mural R.J.,et al.Submitted (JUL-2005) to the EMBL/GenBank/DDBJ databases.

Images



AP22324a staining MYL1 in human heart tissue sections by Immunohistochemistry (IHC-P - paraformaldehyde-fixed, paraffin-embedded sections). Tissue was fixed with formaldehyde and blocked with 3% BSA for 0.5 hour at room temperature; antigen retrieval was by heat mediation with a citrate buffer (pH6). Samples were incubated with primary antibody (1/25) for 1 hour at 37°C. A undiluted biotinylated goat polyvalent antibody was used as the secondary antibody.



All lanes : Anti-MYL1 Antibody (N-Term) at 1:2000 dilution
Lane 1: Human skeletal muscle lysate Lane 2: Rat skeletal muscle lysate Lysates/proteins at 20 µg per lane.
Secondary Goat Anti-Rabbit IgG, (H+L), Peroxidase conjugated at 1/10000 dilution. Predicted band size : 21 kDa Blocking/Dilution buffer: 5% NFDM/TBST.

Please note: All products are 'FOR RESEARCH USE ONLY. NOT FOR USE IN DIAGNOSTIC OR THERAPEUTIC PROCEDURES'.