

# COL14A1 Antibody (Center)

Purified Rabbit Polyclonal Antibody (Pab)

Catalog # AP22329c

## Product Information

---

<b>Application</b>	WB, FC, IHC-P, E
<b>Primary Accession</b>	<a href="#">Q05707</a>
<b>Reactivity</b>	Human, Mouse
<b>Host</b>	Rabbit
<b>Clonality</b>	polyclonal
<b>Isotype</b>	Rabbit IgG
<b>Clone Names</b>	RB57775
<b>Calculated MW</b>	193515

## Additional Information

---

<b>Gene ID</b>	7373
<b>Other Names</b>	Collagen alpha-1(XIV) chain, Undulin, COL14A1 ( <a href="#">HGNC:2191</a> ), UND
<b>Target/Specificity</b>	This COL14A1 antibody is generated from a rabbit immunized with a KLH conjugated synthetic peptide between 643-677 amino acids from the Central region of human COL14A1.
<b>Dilution</b>	WB~~1:2000 FC~~1:25 IHC-P~~1:100~500 E~~Use at an assay dependent concentration.
<b>Format</b>	Purified polyclonal antibody supplied in PBS with 0.09% (W/V) sodium azide. This antibody is purified through a protein A column, followed by peptide affinity purification.
<b>Storage</b>	Maintain refrigerated at 2-8°C for up to 2 weeks. For long term storage store at -20°C in small aliquots to prevent freeze-thaw cycles.
<b>Precautions</b>	COL14A1 Antibody (Center) is for research use only and not for use in diagnostic or therapeutic procedures.

## Protein Information

---

<b>Name</b>	COL14A1 ( <a href="#">HGNC:2191</a> )
<b>Synonyms</b>	UND
<b>Function</b>	Plays an adhesive role by integrating collagen bundles. It is probably associated with the surface of interstitial collagen fibrils via COL1. The COL2 domain may then serve as a rigid arm which sticks out from the fibril and

protrudes the large N-terminal globular domain into the extracellular space, where it might interact with other matrix molecules or cell surface receptors (By similarity).

#### Cellular Location

Secreted, extracellular space, extracellular matrix  
{ECO:0000250|UniProtKB:P32018}

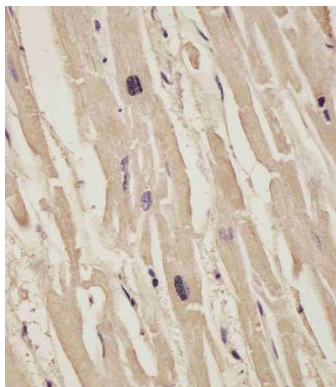
## Background

Plays an adhesive role by integrating collagen bundles. It is probably associated with the surface of interstitial collagen fibrils via COL1. The COL2 domain may then serve as a rigid arm which sticks out from the fibril and protrudes the large N-terminal globular domain into the extracellular space, where it might interact with other matrix molecules or cell surface receptors (By similarity).

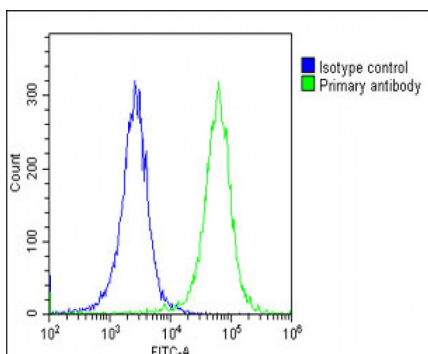
## References

Nusbaum C.,et al.Nature 439:331-335(2006).  
Bauer M.,et al.Biochim. Biophys. Acta 1354:183-188(1997).  
Just M.,et al.J. Biol. Chem. 266:17326-17332(1991).  
Brown J.C.,et al.Matrix Biol. 14:287-295(1994).  
Schuppan D.,et al.J. Biol. Chem. 265:8823-8832(1990).

## Images



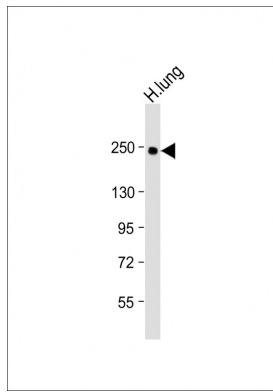
AP22329c staining COL14A1 in human heart tissue sections by Immunohistochemistry (IHC-P - paraformaldehyde-fixed, paraffin-embedded sections). Tissue was fixed with formaldehyde and blocked with 3% BSA for 0.5 hour at room temperature; antigen retrieval was by heat mediation with a citrate buffer (pH6). Samples were incubated with primary antibody (1/25) for 1 hour at 37°C. A undiluted biotinylated goat polyvalent antibody was used as the secondary antibody.



Overlay histogram showing HeLa cells stained with AP22329c(green line). The cells were fixed with 2% paraformaldehyde (10 min) and then permeabilized with 90% methanol for 10 min. The cells were then incubated in 2% bovine serum albumin to block non-specific protein-protein interactions followed by the antibody (AP22329c, 1:25 dilution) for 60 min at 37°C. The secondary antibody used was Goat-Anti-Rabbit IgG, DyLight® 488 Conjugated Highly Cross-Adsorbed(OE188374) at 1/200 dilution for 40 min at 37°C. Isotype control antibody (blue line) was rabbit IgG1 (1µg/1x10<sup>6</sup> cells) used under the same conditions. Acquisition of >10,000 events was performed.

Anti-COL14A1 Antibody (Center) at 1:2000 dilution + Human lung lysate Lysates/proteins at 20 µg per lane. Secondary Goat Anti-Rabbit IgG, (H+L), Peroxidase conjugated at 1/10000 dilution. Predicted band size : 194

kDa Blocking/Dilution buffer: 5% NFDM/TBST.



Please note: All products are 'FOR RESEARCH USE ONLY. NOT FOR USE IN DIAGNOSTIC OR THERAPEUTIC PROCEDURES'.