

COXIV Antibody

Purified Rabbit Polyclonal Antibody (Pab)

Catalog # AP22351a

Product Information

Application	IF, WB, E
Primary Accession	P19783
Other Accession	P10888
Reactivity	Human, Rat, Mouse
Predicted	Rat
Host	Rabbit
Clonality	polyclonal
Isotype	Rabbit IgG
Clone Names	RB58106
Calculated MW	19530

Additional Information

Gene ID	12857
Other Names	Cytochrome c oxidase subunit 4 isoform 1, mitochondrial, Cytochrome c oxidase polypeptide IV, Cytochrome c oxidase subunit IV isoform 1, COX IV-1, Cox4i1, Cox4, Cox4a
Target/Specificity	This COXIV antibody is generated from a rabbit immunized with a KLH conjugated synthetic peptide between 49-83 amino acids from the mouse region of mouse COXIV.
Dilution	IF~~1:25 WB~~1:2000 E~~Use at an assay dependent concentration.
Format	Purified polyclonal antibody supplied in PBS with 0.09% (W/V) sodium azide. This antibody is purified through a protein A column, followed by peptide affinity purification.
Storage	Maintain refrigerated at 2-8°C for up to 2 weeks. For long term storage store at -20°C in small aliquots to prevent freeze-thaw cycles.
Precautions	COXIV Antibody is for research use only and not for use in diagnostic or therapeutic procedures.

Protein Information

Name	Cox4i1
Synonyms	Cox4, Cox4a, Coxiv {ECO:0000303 PubMed:3

Function Component of the cytochrome c oxidase, the last enzyme in the mitochondrial electron transport chain which drives oxidative phosphorylation. The respiratory chain contains 3 multisubunit complexes succinate dehydrogenase (complex II, CII), ubiquinol- cytochrome c oxidoreductase (cytochrome b-c1 complex, complex III, CIII) and cytochrome c oxidase (complex IV, CIV), that cooperate to transfer electrons derived from NADH and succinate to molecular oxygen, creating an electrochemical gradient over the inner membrane that drives transmembrane transport and the ATP synthase. Cytochrome c oxidase is the component of the respiratory chain that catalyzes the reduction of oxygen to water. Electrons originating from reduced cytochrome c in the intermembrane space (IMS) are transferred via the dinuclear copper A center (CU(A)) of subunit 2 and heme A of subunit 1 to the active site in subunit 1, a binuclear center (BNC) formed by heme A3 and copper B (CU(B)). The BNC reduces molecular oxygen to 2 water molecules using 4 electrons from cytochrome c in the IMS and 4 protons from the mitochondrial matrix.

Cellular Location Mitochondrion inner membrane; Single-pass membrane protein

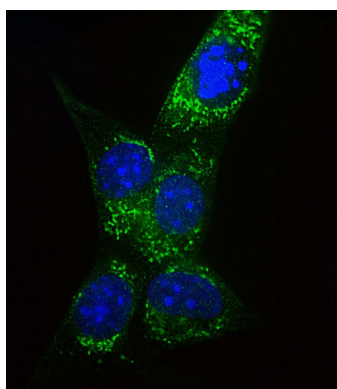
Background

This protein is one of the nuclear-coded polypeptide chains of cytochrome c oxidase, the terminal oxidase in mitochondrial electron transport.

References

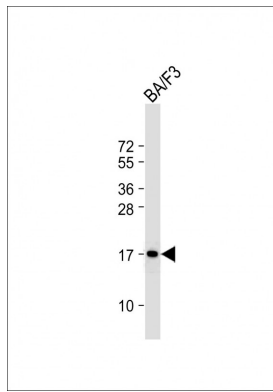
Grossman L.I.,et al.Nucleic Acids Res. 18:6454-6454(1990).
Carter R.S.,et al.Arch. Biochem. Biophys. 288:97-106(1991).
Carninci P.,et al.Science 309:1559-1563(2005).
Lubec G.,et al.Submitted (APR-2007) to UniProtKB.
Park J.,et al.Mol. Cell 50:919-930(2013).

Images



Immunofluorescent analysis of 4% paraformaldehyde-fixed, 0.1% Triton X-100 permeabilized NIH/3T3 cells labeling Cox4i1 with AP22351a at 1/25 dilution, followed by Dylight® 488-conjugated goat anti-Rabbit IgG secondary antibody at 1/200 dilution (green). Immunofluorescence image showing Cytoplasm staining on NIH/3T3 cell line. The nuclear counter stain is DAPI (blue).

Anti-COXIV Antibody at 1:2000 dilution + BA/F3 whole cell lysate Lysates/proteins at 20 µg per lane. Secondary Goat Anti-Rabbit IgG, (H+L), Peroxidase conjugated at 1/10000 dilution. Predicted band size : 17 kDa Blocking/Dilution buffer: 5% NFDM/TBST.



Please note: All products are 'FOR RESEARCH USE ONLY. NOT FOR USE IN DIAGNOSTIC OR THERAPEUTIC PROCEDURES'.