

PRG4 Antibody (N-Term)

Purified Rabbit Polyclonal Antibody (Pab)

Catalog # AP22357a

Product Information

Application	WB, IF, E
Primary Accession	Q92954
Reactivity	Human
Predicted	Human
Host	Rabbit
Clonality	polyclonal
Isotype	Rabbit IgG
Clone Names	RB57887

Additional Information

Other Names	Proteoglycan 4, Lubricin, Megakaryocyte-stimulating factor, Superficial zone proteoglycan, Proteoglycan 4 C-terminal part, PRG4, MSF, SZP
Target/Specificity	This PRG4 antibody is generated from a rabbit immunized with a KLH conjugated synthetic peptide between 176-210 amino acids from the human region of human PRG4.
Dilution	WB~~1:500 IF~~1:25 E~~Use at an assay dependent concentration.
Format	Purified polyclonal antibody supplied in PBS with 0.09% (W/V) sodium azide. This antibody is purified through a protein A column, followed by peptide affinity purification.
Storage	Maintain refrigerated at 2-8°C for up to 2 weeks. For long term storage store at -20°C in small aliquots to prevent freeze-thaw cycles.
Precautions	PRG4 Antibody (N-Term) is for research use only and not for use in diagnostic or therapeutic procedures.

Protein Information

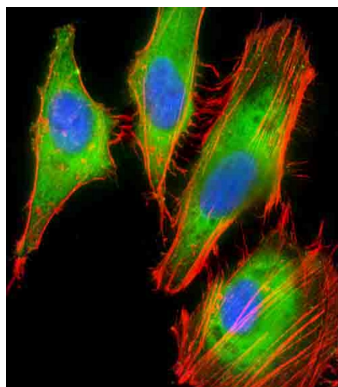
Background

Plays a role in boundary lubrication within articulating joints. Prevents protein deposition onto cartilage from synovial fluid by controlling adhesion-dependent synovial growth and inhibiting the adhesion of synovial cells to the cartilage surface.

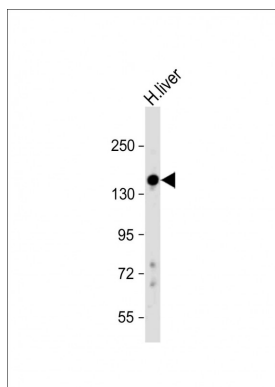
References

Turner K.J.,et al.Submitted (SEP-1996) to the EMBL/GenBank/DDBJ databases.
Ota T.,et al.Nat. Genet. 36:40-45(2004).
Gregory S.G.,et al.Nature 441:315-321(2006).
Jones A.R.,et al.Submitted (JUN-2004) to the EMBL/GenBank/DDBJ databases.
Flannery C.R.,et al.Biochem. Biophys. Res. Commun. 254:535-541(1999).

Images



Immunofluorescent analysis of 4% paraformaldehyde-fixed, 0.1% Triton X-100 permeabilized HeLa (human cervical epithelial adenocarcinoma cell line) cells labeling PRG4 with AP22357a at 1/25 dilution, followed by Dylight® 488-conjugated goat anti-rabbit IgG (1583138) secondary antibody at 1/200 dilution (green). Immunofluorescence image showing cytoplasm staining on HeLa cell line. Cytoplasmic actin is detected with Dylight® 554 Phalloidin (PD18466410) at 1/100 dilution (red).The nuclear counter stain is DAPI (blue).



Anti-PRG4 Antibody (N-Term) at 1:500 dilution + Human liver whole cell lysate Lysates/proteins at 20 µg per lane. Secondary Goat Anti-Rabbit IgG, (H+L), Peroxidase conjugated at 1/10000 dilution. Predicted band size : 151 kDa Blocking/Dilution buffer: 5% NFDM/TBST.

Please note: All products are 'FOR RESEARCH USE ONLY. NOT FOR USE IN DIAGNOSTIC OR THERAPEUTIC PROCEDURES'.