

# OR2AE1 Antibody (C-term)

Purified Rabbit Polyclonal Antibody (Pab)

Catalog # AP22362b

## Product Information

---

<b>Application</b>	WB, E
<b>Primary Accession</b>	<a href="#">Q8NHA4</a>
<b>Reactivity</b>	Human
<b>Predicted</b>	Human
<b>Host</b>	Rabbit
<b>Clonality</b>	polyclonal
<b>Isotype</b>	Rabbit IgG
<b>Clone Names</b>	RB46734
<b>Calculated MW</b>	36588

## Additional Information

---

<b>Gene ID</b>	81392
<b>Other Names</b>	Olfactory receptor 2AE1, Olfactory receptor 2AE2, OR2AE1, OR2AE2
<b>Target/Specificity</b>	This OR2AE1 antibody is generated from a rabbit immunized with a KLH conjugated synthetic peptide between 278-312 amino acids from the C-terminal region of human OR2AE1.
<b>Dilution</b>	WB~~1:1000 E~~Use at an assay dependent concentration.
<b>Format</b>	Purified polyclonal antibody supplied in PBS with 0.09% (W/V) sodium azide. This antibody is purified through a protein A column, followed by peptide affinity purification.
<b>Storage</b>	Maintain refrigerated at 2-8°C for up to 2 weeks. For long term storage store at -20°C in small aliquots to prevent freeze-thaw cycles.
<b>Precautions</b>	OR2AE1 Antibody (C-term) is for research use only and not for use in diagnostic or therapeutic procedures.

## Protein Information

---

<b>Name</b>	OR2AE1
<b>Synonyms</b>	OR2AE2
<b>Function</b>	Odorant receptor.
<b>Cellular Location</b>	Cell membrane; Multi-pass membrane protein.

## Background

---

Odorant receptor.

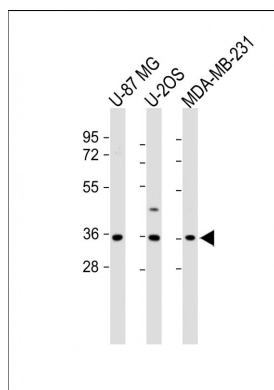
## References

---

Suwa M., et al. Submitted (JUL-2001) to the EMBL/GenBank/DDBJ databases.

## Images

---



All lanes : Anti-OR2AE1 Antibody (C-term) at 1:1000 dilution Lane 1: U-87 MG whole cell lysate Lane 2: U-2OS whole cell lysate Lane 3: MDA-MB-231 whole cell lysate Lysates/proteins at 20 µg per lane. Secondary Goat Anti-Rabbit IgG, (H+L), Peroxidase conjugated at 1/10000 dilution. Predicted band size : 36 kDa Blocking/Dilution buffer: 5% NFDM/TBST.

Please note: All products are 'FOR RESEARCH USE ONLY. NOT FOR USE IN DIAGNOSTIC OR THERAPEUTIC PROCEDURES'.